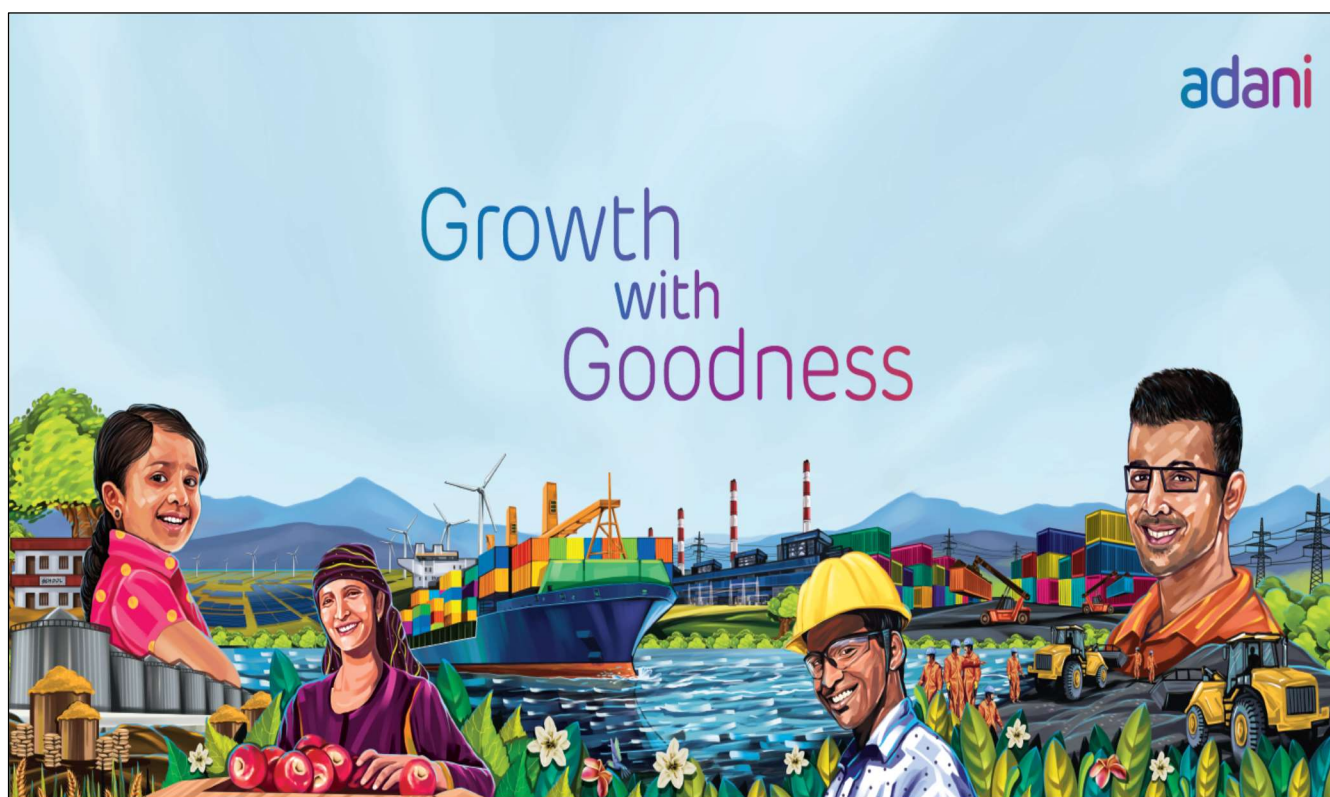


Berthing Policy & Tariff Structure

Adani Ports and Sez Limited Mundra



OUR VALUES: COURAGE, TRUST AND COMMITMENT

Issue: BPTS/MUN/04 | w.e.f 1st OCT 2023

Note:

1. Changes in the existing BPTS from the previous edition have been highlighted. All trade notices issued till date have been incorporated in BPTS.
2. The tariff and scale of rates are subject to revision. In view of the same, please refer to the trade notices for the latest rates tariff for a particular service or commodity.

Index

Table of Contents

| | |
|--|-----------|
| RECORDS OF CHANGES | 3 |
| INTRODUCTION | 4 |
| SECTION A | 6 |
| I. POLICIES | 6 |
| II. DEFINITIONS | 6 |
| III. BERTHING POLICY | 11 |
| 1. Berthing Objective..... | 11 |
| 2. Rationale..... | 11 |
| 3. Berthing scheme: First come First serve (FCFS) | 11 |
| 4. General guidelines for all Vessels | 12 |
| 5. Clarification regarding acceptance of Notice of Readiness time | 13 |
| 6. Daily Port Berth Planning Meeting (Port Operation Center)..... | 14 |
| 7. Dry cargo breaks timings..... | 14 |
| 8. General conditions for berthing / un-berthing and cargo operations of vessels | 14 |
| 9. Free time allowed to vessels prior cargo commencement and after completion | 16 |
| 10. Lay-up berth hire | 17 |
| 11. Import / Export voyage in same VCN | 18 |
| 12. Anchorage charges | 18 |
| 13. Documents require in prescribed format through IPOS/ITUP for declaration | 18 |
| 14. Minimum Notice required for filing Pilot request through IPOS / ITUP | 20 |

| | |
|--|----|
| 15. Swapping of Seniority | 20 |
| 16. Shifting of vessels | 21 |
| 17. Immobilization Permission | 22 |
| 18. Standard time for cargo commencement and completion | 22 |
| SECTION B | 23 |
| 19. Berth Parameters, the indicative berth allocation parameters are given in the following table..... | 23 |
| 20. Berth allotment criteria | 25 |
| 21. Priority berthing guidelines for liquid tankers | 26 |
| 22. Berthing / Un-berthing guidelines for vessels | 27 |
| IV. MARINE TARIFF | 29 |
| V. PIDC CHARGES..... | 44 |
| VI. TARIFF FOR SALVAGE OPERATION | 44 |
| VII. STEVEDORING TARIFF | 45 |
| VIII.CONTACT DETAILS | 51 |

Records of Changes

| Trade notice. no | Issue Date | Changes |
|---------------------|---------------|---|
| | OCT-23 | Change in definition warding commence work and Gross Tonnage |
| | OCT-23 | Change in Pilot attendance charges |
| | OCT-23 | Change In mooring charges & added Sustainability charges |
| | OCT-23 | Change Non berth vacating charges |
| | OCT-23 | Change in pilot detention & cancellation charges |
| | OCT-23 | Change in dumb barge charges |
| | OCT-23 | Change tug hire for transportation slab & Tug hire for ship's store supply |
| | OCT-23 | Change in miscellaneous services i.e Gangway, hydra, vcn cancellation, spilt invoice, Gate entry for supply / onboard workshop, Security Guard, IMDG Cargo transshipment permission for class 1&7, Ambulance charges |
| | OCT-23 | New services for photo/videography, permission for vessel name / draft mark change on ship's hull, applying wrong VCN NDC, |
| | OCT-23 | Change in Agency registration charges |
| | OCT-23 | Revision of STS tariff- Port Dues |
| | | |
| | | |

THE TARIFF CHANGE PROCEDURE:-

The Berthing Policy and tariff Structure will be reviewed and updated BPTS sent in April and October month. The changes will be made basis the business scenario and cost of operations, keeping in view the best interest of the stake holders involved.

The changes also are reviewed from the perspective of implementation using the invoicing software.

Irrespective of the initiator of the change, the new changes will be reviewed by all SBUs and approved by the CEO.

All the trade notices will be uploaded on website <https://www.adaniports.com/Downloads>

All the trade notices issued from April to Sep and Oct to March will be incorporated in BPTS, October and April month revision respectively. The BPTS to be read in conjunction with trade circulars issued subsequently by the port from time to time which would also be uploaded on to the website.

| | |
|----------------------|-----------------|
| Approved by | |
| Mr. Sujal Shah (CEO) | APSEZL – MUNDRA |

Introduction

Adani Ports and Special Economic Zone Limited

- Adani Ports and Special Economic Zone Ltd. (APSEZ) is the largest privately developed port in the country and a multi sector SEZ which is spread over 100 sq. km in Kutch, Gujarat India. The port is located in the Northern Gulf of Kutch, enroot major maritime routes, making it one of the country's most convenient gateway for Exim trade, It's proximity to hinterland of North and North West India, gives it a strategic advantage to serve the Industry and trade of this landlocked region, which contributes around 70% of India's total international containerized cargo.
- APSEZ has been operational since 1998 and over **150** million MT of cargo was handled during **FY: 2022-23**. Adani group's passion for converting opportunity into reality has led to APSEZ being conferred with the following awards.
 - Best Container Handling Terminal of the year by MALA Awards at Mumbai on September 2017
 - Best Private port of the year by MALA Awards at Mumbai on September 2017
 - The Maritime Nation India Environment Protection Award for best Environment Protection Award 2017.
 - "Best Terminals and Ports Operator" at the 11th Express, Logistics & Supply Chain Leadership Awards on October 2017.
 - Best Shipping port of the year award at India Cargo award on October 2017 .
 - Port of the year for Containerized Cargo at 9th Gujarat Junction 2018 – Cargo and Logistics on March 2018.
 - Private Port of the Year in Samudra Manthan Awards
 - Smart Container Terminal Award 2018 at Gateway Maritime award Delhi.
 - Best-In-Class Quality Excellence in Procurement, Best Terminal & Port Operators, Best Container Handling Port / Terminal, 12th ELSC Leadership Awards received on 04th October 2018 at Mumbai
 - Green India Award 2019 - Best Waste Management Organization of the Year.
 - Greentech Sustainability Award 2020
 - Best Container Terminal of the Year – AICTPL -2021
 - Best Port of the Year (Containerized & Non-Containerized in Private Sector) 2021.
 - Best Sea Port of the year 2021-22 at the northern India multimodal logistic awards 2022.
- **Some of the salient features of APSEZ are as follows.**
 - APSEZ has a diverse cargo base including dry, bulk, break bulk, liquid, crude oil, project cargo, cars, LPG and containers which diversify its business risks and is a unique model for private ports, so far.
 - We have a large waterfront for future expansion.
 - APSEZ has one of the deepest drafts amongst all ports in India.
 - **30** operational berths which can accept biggest and deepest draft vessels as per draft declare in monthly draft declaration for handling dry bulk, break bulk, LPG, LNG, containers and liquid cargoes. The berths are designed to accommodate Post Panamax and Cape size vessels.
 - APSEZL has four container terminals have capacity of 6.6 million TEUs
 - Two SPMs to handle VLCC tankers for IOCL and HMEL.

- Dedicated Container Freight Stations (CFS) having easy access to rail and port complex for smooth movement of containers.
- The West Basin is the India's largest coal import terminal. Three berths are fully mechanized and operational along with supporting infrastructure for unloading of vessels.
- **Logistical advantage due to network of unparalleled road, rail, sea, and air connectivity.**
 - APSEZ has its own dedicated 64 km private double lane rail network which is capable of handling double stack container trains. APSEZ provides logistic advantage of 380 km to the Northern hinterland of India as compared to JNPT.
 - APSEZ has good connectivity to NH 8A, NH 15 and other state highways.
 - APSEZ has a functional aerodrome capable of handling private jets. Mundra is also well connected to two commercial airports which are within a distance of 60 kms from Mundra.
 - Dry cargo infrastructure capable of handling all types of dry cargo.
 - F.C.C– Fertilizer Cargo Complex. Mechanized system for bagging and loading of fertilizer bags into railway wagons for fast evacuation of cargo.
 - Large storage capacity is available within the port in the form of open and covered warehouses.
 - Large tank farm within the Port to store liquid cargoes.
 - APSEZ aims to handle 166 million tons of cargo in the year 2023-24.

Section A

I. Policies

- **Security Policy**

"We are committed to provide a safe and secure working environment to all its employees, port users, cargo, ships and its personnel. This will be achieved by establishing and maintaining the required security measures to prevent unlawful acts against people, cargo and marine assets." "We shall strive to detect and deter unauthorized entrants and criminal activities in port facilities and react timely and correctly when such activities are encountered."

- **Quality Health Safety and Environment Policy**

Adani is committed to Quality, Occupational Health, Safety and Environment in port business. We consider QHSE responsibilities are integral part of our business. To meet this commitment, port shall abide by the following principles:

- Satisfy our customers by maintaining a standard of service that consistently meets the agreed requirements.
- Focus on occupational health & safety of employees, pollution prevention, preservation & protection of environment at all times and in all circumstances.
- Identify and analyse the HSE risks arising from our activities to reduce them to the lowest possible levels.
- Eliminate or reduce the potential and severity of injuries, damages to material and non-material assets, and impact on environment & community arising out of our operations.
- Conform to applicable legislations, regulations, and other requirements on QHSE and take additional measures considered necessary.
- Shall strive to achieve the QHSE goals and performance objectives, using effective management system; and reviewed to improve performance.
- Develop, conduct, and promote education and training to improve QHSE performance.
- Continually improve QHSE management system by monitoring, evaluating, and reviewing through the definition of operational standards, assessments and audits. Communicate our policies and standards to employees, suppliers, business partners and where necessary work with them to raise their standards.

II. Definitions

- **Agent:** A person authorized to transact business for and in the name of another person or company. Types of agents are: (1) Brokers, (2) Commission Merchants, (3) Resident Buyers, (4) Sales Agents, (5) Manufacturer's representatives.
- **Beam:** The width of the ship.
- **Berth:** A space for a ship to dock or anchor.
- **Bonded Warehouse:** A warehouse authorized by Customs authorities for storage of goods on which Payment of duties is deferred until the goods are removed.
- **Break Bulk:** To unload and distribute a portion or all of the contents of a rail car, container, trailer, or ship. Loose, non-containerized mark and count cargo, packaged cargo that is not containerized.

- **Bunkers:** A maritime term referring to fuel used aboard the ship. In the past, fuel coal stowage areas aboard a vessel were in bins or bunkers.
- **Bill of Lading :** Shall mean a documents that establishes the terms of contract between a Shipping and a Transportation company.
- **Calendar day :** A Calendar day time period is considered from midnight to midnight (i.e. 0001 to 2359hrs).
- **Cargo:** All goods, materials, merchandise, or wares carried on board an aircraft, ship, train, or truck.
- **CB:** Container Berth.
- **Commence work :** For Inward vessel, after POB manoeuvring command commenced by the pilot and for outward vessel, as confirm by the pilot, vessel is ready for unberthing in all respect
- **CBM (CM):** Abbreviation for "Cubic Meter." CBM measurement is L x B x H.
- **CFS:** Abbreviation for "Container Freight Station." A shipping dock where cargo is loaded ("stuffed") into or unloaded ("stripped") from containers. Generally, this involves less than container load shipments, although small shipments destined to same consignee are often consolidated. Container reloading from/to rail or motor carrier equipment is a typical activity. These facilities can be located in container yards, or off dock.
- **Cold move:** The vessel's engine and steering gear should be available for use at all times during the manoeuvre. If it is fails during berthing / un-berthing / shifting process, it will be treated as cold move and charged as per tariff.
- **Coastal :** "Coastal vessel" shall mean any vessel exclusively employed in trading between any port or place in India to any other port or place in India having a valid coastal licence issued by the Director General of Shipping/ Competent Authority.
- **CT:** Container Terminal.
- **Deadweight Tonnage (DWT):** Appropriate seasonal deadweight.
- **Detention for cargo on equipment:** Additional charges will be applicable on shippers or consignees for delaying carrier's equipment beyond allowed time. Demurrage applies to cargo; detention applies to equipment.
- **Draft:** Vertical distance between the vessel's water line and the lowest part of its hull.
- **Dunnage:** Any material or objects utilized to protect cargo. Examples of dunnage are blocks, boards, burlap and paper.
- **Drifting :** Vessel not at anchor or made fast to a berth. In simple words when a vessel is afloat and in no way is touching the ground or seabed.
- **Double Banking operation :** Two vessels are banked together for cargo operation.

- **ETA:** Expected Time of arrival.
- **Export:** Shipment of goods to a foreign country.
- **FCFS:** First Come First Served.
- **Freight Forwarder:** A person whose business is to act as an agent on behalf of the shipper. A freight forwarder frequently makes the booking reservation. In the United States, freight forwarders are now licensed by the FMC as "Ocean Intermediaries."
- **FRT: Freight Tones:** CBM or MT whichever is higher. Individually calculated for the packing list.
- **Foreign :** Foreign-going vessel" shall mean any vessel other than Coastal vessel.
- **GT:** The unit of measurement for the gross content of a Seagoing Vessel as referred to in the International Convention on Tonnage Measurement of Ships, London 1969 (Treaties journal 1979, no 122 and 194) as mentioned in the vessel latest international tonnage certificate.
- **Hold Washing/Cleaning:** "Normal Cleaning / sweeping / moping for the change of cargo requiring the holds to be swept to remove all previous cargo remains, washed down and dried ready to receive a similar or compatible cargo.
- **International Ship and Port Facility Security Code (ISPS):** It is an amendment to the Safety of Life at Sea (SOLAS) Convention (1974/1988) on minimum security arrangements for ships, ports and government agencies. Having come into force in 2004, it prescribes responsibilities to governments, shipping companies, shipboard personnel, and port/facility personnel to "detect security threats and take preventative measures against security incidents affecting ships or port facilities used in international trade."
- **IWPM / OWPM:** Inward Pilot Memo / Outward Pilot Memo.
- **Idling:** If a vessel is alongside the berth without carrying out any cargo operations.
- **Kg:** Kilogram.
- **LOA:** Length Overall.
- **LPG :** LPG is a type of fuel consisting of hydrocarbon gases in liquid form. LPG is an abbreviation for 'liquefied petroleum gas'
- **LNG:** Liquefied natural gas is natural gas that has been converted to a liquid form for the ease and safety of natural gas transport.
- **LRF :** Laser range finder
- **Monsoon Period for Mundra port:** Monsoon period at APSEZL, Mundra is from 15th May to 30th September each year.
- **Mtrs:** meters.
- **MW:** Megawatt.

- **NH:** National Highway.
- **O.D.C:** Over Dimension Cargo.
- **On Board:** A notation on a bill of lading that cargo has been loaded on board a vessel. Used to satisfy the requirements of a letter of credit, in the absence of an express requirement to the contrary.
- **P&I:** Protection & Indemnity.
- **POB:** Pilot onboard it is the time when pilot onboard before Berthing, Unberthing and shifting of the vessel.
- **PANS:** Pre-arrival notification of security.
- **Per day:** 24hrs calculated from commencement of the mentioned activity. Any period part thereof will be considered as full day and charged accordingly.
- **POC:** Port Operation Center.
- **Priority Berthing:**
 - **Ousting Priority:** If a vessel having an ousting priority for a given berth, then the working vessel at that berth will be removed from the berth to accommodate the vessel having ousting priority. The vessel working on the berth will however be removed only when it is safe to do so.
 - **Priority:** If a vessel having a priority for a given berth arrives, then she will berthed ahead of other vessel waiting for that berth once the berth falls vacant.
 - **Overriding Priority:** If a berth has been allotted to a specific cargo/receiver, then these vessels will have priority on that berth. However, if a vessel with overriding priority arrives and requires the use of that berth, she will be berthed ahead of other waiting vessels having the same cargo/receivers.
- **Ro/Ro:** A shortening of the term, "Roll On/Roll Off." A method of ocean cargo service using a vessel with ramps which allows wheeled vehicles to be loaded and discharged without cranes. Also refers to any specialized vessel designed to carry Ro/Ro cargo.
- **Salvage operations :** Salvage is one service offered by the port under the general heading of emergency response to distressed vessels – that is, emergency response to render assistance to vessels in danger, or potentially in danger and/or the process of rescuing a vessel, her crew and cargo from hazard and danger in port or at sea.
- **TEU:** "Twenty feet Equivalent Unit." is an exact unit of cargo capacity often used to describe capacity of container ships.
- **Timings:** All timings will be based on Pilotage Certificate which is signed by the vessel's Master.
- **TPH:** Tons per hour.
- **Trans-shipment Port:** Place where cargo is transferred to another carrier.

- **VCN:** Vessel Call Number.
- **Warehouse:** A place for the reception, delivery, consolidation, distribution, and storage of goods/cargo.
- **Warping:** Physical shifting of the vessel maximum 100 mtrs ahead / astern on the same berth same berth.
- **WB:** West Basin.
- **Types of Ships:**
 - **Bulk Carriers:** All vessels designed to carry homogeneous cargo in bulk, such as fertilizers, ore, coal, minerals and grains.
 - **Freighters:** Break-bulk vessels both refrigerated and unrefrigerated, containerships, partial container ships, roll-on/roll-off vessels, and barge carriers. A general cargo vessel designed to carry heterogeneous mark and count cargoes.
 - **Barge Carriers:** Ships designed to carry barges; some are fitted to act as full container.
 - **General Cargo Carriers:** Break-bulk freighters, car carriers, cattle carriers, pallet carriers and timber carriers. A vessel designed to carry heterogeneous mark and count cargoes.
 - **Cellular Container ships:** Ships equipped with permanent container cells, with little or no space for other types of cargo.
 - **Partial Container ships:** Multipurpose container ships where one or more but not all compartments are fitted with permanent container cells. Remaining compartments are used for other types of cargo.
 - **Roll-on/Roll-off vessels:** Ships specially designed to carry wheeled containers or trailers using interior ramps.
 - **STS :** Ship-to-ship transfer operation is the transfer of cargo between seagoing ships positioned alongside each other, either while stationary or underway. Cargoes typically transferred via STS methods include crude oil, liquefied gas, bulk cargo, and petroleum products.
 - **Tankers:** Ships fitted with tanks to carry liquid bulk cargo such as: crude petroleum and petroleum products, chemicals, Liquefied gasses (LNG and LPG), wine, molasses, and similar product tankers.
- **Free pratique:** means permission for Ship/vessel to enter into the port limits, embark or disembark, discharge or load cargo or stores. Free Pratique is granted by Public health officer (PHO).
- **Quarantine:** Quarantine means the restriction of activities and/or separation of suspect persons who are not ill or of suspect baggage, containers, ship/vessel or goods from others in such a manner so as to prevent the possible spread of infection or contamination.

III. Berthing Policy

1. Berthing Objective

The objective of the Berthing Policy at Adani ports is to provide well-defined, transparent, and non-discriminatory guidelines for the allocation of berths at the Port, based on vessel pre-notification, arrival, and administrative compliances.

2. Rationale

The aim of this BPTS is to provide the user with relevant information for planning of a vessel call at the port and the charges that are likely to be incurred.

3. Berthing scheme: First come First serve (FCFS)

The Port, as a general rule, adopts the policy of First Come First Serve (FCFS) basis, Container vessels are generally accepted basis their berthing windows as agreed between the Shipping Line and the concerned Container Terminal. For all cargo vessels, the following criteria will be used by the Port for determining the berthing priority:

- 3.1** The vessel has to duly submit the required Declaration / Information / PANS (ISPS) prior vessel's arrival / statutory compliance of government directives as issued from time to time. Vessel's agents are required to declare their vessels through IPOS. All vessels related details to be updated in vessel definition and vessel voyage registration. The details should be entered as per the vessel's particular. In case any information is incomplete or missing in IPOS, the vessel's application for berth will not be accepted.
- 3.2** Vessel agent has to pay all the Port charges in advance as per PAA raised by the Port. The first PAA will be generated basis the berth hours expected by the agent subject to a minimum berth stay of 24 hours. In case the vessel completes her cargo operation in less than 24 hours, the additional berth hire charges will be adjusted in the final invoice. Maximum 6 digit digits after decimal (upward round off) will be consider in USD rate for invoicing of Marine charges.
- 3.3** Vessel has to give at least 5/3/2/1 days notices of Expected Time of Arrival (ETA), except vessels calling from nearby ports or the voyage duration is around 1 day, which are required to provide one day notice.
- 3.4** Vessel which has physically arrived within the port limits or at defined position and registered herself with Port Marine Control giving all the vessels particulars. Physical arrival means the time of arrival of vessel into Port Limits or at defined position.
- 3.5** Seniority of a vessel will be counted basis the time of her physical arrival, filing of IWPM, Cargo readiness, clearance from concerned department with respect to cargo readiness, receipt of pipe check list, verification of packing list and Terminal readiness whichever is later and applicable for that vessel.
- 3.6** Contractual agreements in place: Customers who have entered into long term contracts with the Port will be given priority in berthing as per their contractual terms & conditions. Port will not be liable for payment of any damages / claims / delays / detentions / demurrages etc. to vessels, whose berthing is delayed due to berthing of junior vessels which have been given priority in berthing as per their contractual agreements.

- 3.7** In case of pipe export vessels, seniority will only be considered for vessels if "80% Let Export Orders" of each type/size/ diameter of pipe is available in the Port for loading. If cargo is found to be less than the aforementioned quantity, such vessels will not be considered / discussed in Port berthing meeting and seniority of such vessels will only be considered upon meeting the aforementioned norms. Similarly for other export cargoes, seniority will only be considered provided 80% with LEO of the cargo is inside the Port.

4. General guidelines for all Vessels

- 4.1** All vessels calling Mundra Port has to send nomination to obtain vessel acceptance from the Port prior to arrival. Vessel will be accepted by the Port based on their declared berth parameters and marketing clearance.
- 4.2** The vessel's engine and steering gear should be available for use at all times during the manoeuvre. If a vessel's engine or steering fails during any point of the berthing / un-berthing / shifting manoeuvre, it will be treated as cold move and will be charged as per Port tariff.

Note: If vessel engine fails during outward Pilotage and cold move charges become applicable to such vessels, the vessel may be required to wait at anchorage until payment for cold move charges is received from the vessel owners.

- 4.3** Any vessel deficiency must be reported to the port well in advance through email to Portopscenter portopscenter@adani.com or through VHF on Channel 77 to Mundra Marine Control prior berthing / un-berthing / shifting warping operations. Non reporting of such deficiency will attract charges as per BPTS vessel depending upon the type of deficiency. If engines or steering is not available then these manoeuvres will be considered as cold move and charged as per Port tariff.
- 4.4** A vessel refusing an allocated berth for any reason will lose her seniority.
- 4.5** The Port permits priority berthing for vessels carrying government cargoes (as may be declared from time to time) for which 100% additional berth hire may be charged by the Port as per the Management's discretion. Priority berthing is also granted to long term contractual partners.
- 4.6** Priority berthing is also granted to long term contractual partners, as a general rule, ousting priority is not available. However, if the port is forced to grant ousting priority to any vessel for whatsoever reason, all related charges including but not limited to viz. shifting, time lost, equipment idling etc will be payable by the vessel requesting ousting priority.
- 4.7** A '90 minute' notice will be given to vessels for reaching PBG (Pilot Boarding Ground). Any vessel which requires more time than the above notice has to inform Port Control well in advance through her agent or via Port VHF working Channel.
- 4.8** If for any operational reasons or Port convenience, a junior vessel is berthed by superseding the seniority of other vessels, the junior vessel will revert back to her original position in the seniority list if she is shifted out to anchorage.
- 4.9** By making an application for an accepting the berth or other services and facilities in the port, the Vessel and the agent agrees to be bound by the provisions of the General Terms and Conditions for Services, Facilities and general tariff charges as issued and amended from time to time by the Port.

- 4.10 **Preferential berthing for Naval / Coast Guard Ships:** Naval vessels, Indian Coast Guard vessels and other Govt. vessels will be accorded preferential berthing subject to berth availability and Port discretion.
- 4.11 Adani Ports will endeavour services to all Indian Naval Ships (INS), one vessel movement at a time subject to uninterrupted movements of commercial vessels, berth availability and charges as per port discretion.
- 4.12 For all import steel and project vessels, vessel is to be declared with party wise packing list including receiver's details in an excel sheet. For all pipe export vessels, vessel is to be declared with duly filed "Pre Arrival Check list". In absence of same, APSEZ will conditionally declare the vessel and VCN will be provided which allows respective vessel to anchor at Mundra roads. However, the vessel will be considered for berthing seniority only after berthing clearance is received from Dry cargo or Marketing Team as required by the Port. Above procedure will be followed for all vessels arriving in port for import/export of bulk cargoes.
- 4.13 All ships calling the port to get free pratique clearance from the Port Health Officer, prior their arrival. In case vessel requires boarding of PHO for clearance the port will take 1.5 hrs notices for berthing of vessel after it is cleared by PHO.
- 4.14 In case of project cargo, containers or ODC if a variation in Weight / Dimensions between declared cargo weight / Dimensions and actual cargo weight / Dimensions is more than 5% (Actual being higher than declared) then the port would impose an additional stevedoring charge equivalent to the existing tariff as per BPTS or tariff as agreed in applicable contracts.
- 4.15 Agent has to verify the Gross tonnage with Master prior declaration of vessel and submit latest tonnage certificate to the Port. In case of any wrong or late declaration of the amended Gross tonnage, it will be consider as "Wrong declaration of Gross tonnage". All the previous completed voyage invoices under the declaration of the old gross tonnage after the date of issue of the amended tonnage certificate will be revised as per the amended Gross tonnage.
- 4.16 HDFC Bank TT Selling Rate will be used for dollar denominated tariff (first rate card published every-day). In case of holidays, the previous working day HDFC Bank TT Selling rate will be used. The day of vessel berthing shall be used for determining the conversion / exchange rate. If vessel does not used berth then arrival date will be considered for exchange rate.

5. Clarification regarding acceptance of Notice of Readiness time

- 5.1 If Pilot boards the vessel on arrival, then the Pilot boarding time will be considered as the NOR time.
- 5.2 If vessel does not get Pilot on arrival and the vessel drops anchor in the port anchorage area, then the anchor dropped time will be considered as NOR time.
- 5.3 In case a vessel drops anchor in the port anchorage area but does not file Inward Pilot request then the time of filing the inward pilot request will be considered as NOR time.
- 5.4 In case a vessel physically arrives at a distance of 1 mile from Port's pilot station and waits for pilot to board the vessel without dropping anchor then the time of arrival to such position which

is 1 mile from PBG will be considered as NOR time. The time of arrival along with NOR time has to be communicated and confirmed with Marine control on CH-77.

6. Daily Port Berth Planning Meeting (Port Operation Center)

The Port holds Daily Berth Planning Meeting at 1100 hrs on all working days, to plan the allocation of berths for the next 24 hours commencing from 1200 hrs on that day. The vessels agent and concerned parties shall be notified through auto Tentative Berth Plan by 1200 hrs and 1800 hrs through Port Operation Center. Allocation of berth to any vessels other than the FCFS policy will be purely on Port's discretion.

7. Dry cargo breaks timings

- 7.1 0900 to 1000 hrs Shift change.
- 7.2 1300 to 1400 hrs Lunch Break.
- 7.3 2100 to 2200 hrs Shift change.
- 7.4 After completion of break timing, the work should start at the strike of the clock.

8. General conditions for berthing / un-berthing and cargo operations of vessels

8.1 Vessel will not be considered for berthing if the Vessel:

- 8.1.1 Is poorly maintained and is considered unsafe for berthing by the Port.
- 8.1.2 Has invalid statutory certificate, including expired load test certificates of cargo gears.
- 8.1.3 Is blacklisted by Port State Control.
- 8.1.4 Is not manned as per Safe Manning Document.
- 8.1.5 If vessel does not produce proper proof to show that the vessel is suitably insured under DG Shipping authorized P&I club to cover the risk of damage to any port installations (fixed and floating), wreck removal, water, air Pollution and consequent civil liability and any other risks applicable. Restrictions / Instructions / Circulars issued by Government of India and State Maritime Board will be strictly adhered to.
- 8.1.6 Vessel should arrive and depart the port either on even keel or with a positive trim and minimum list. In no case should the vessel be trimmed down by the head or have a list of more than 0.3 degree. In case a vessel is found to be trimmed down by head, the movement of such a vessel may be cancelled for safety reasons as such vessels are very sluggish in handling which is not acceptable in a strong tidal port. Such vessels will be provided pilot only after they have corrected their list and trim. For container vessels which have trim up to 40 cm down by head shall be permitted on case to case basis on prior intimation to Port Control.
- 8.1.7 Draft survey of a vessel which is down by head and listed more than 0.3 degrees will not be conducted unless the vessel comes on even keel and reduces the list to 0.3 degrees. All delay, detention and cost arising from negative trim, list exceeding 0.3

degrees and inability to comply with minimum draft and trim requirement will be on vessels account.

- 8.1.8 Delivery order has to be submitted by the agent to the Port prior berthing of the liquid vessel. Without DO, the vessel will only be berthed if the agent gives in writing that the agency agrees to pay the storage rent and / or any charges which may become payable due to the agent holding the delivery of the cargo.
- 8.1.9 Bulk and Break Bulk vessels will be berthed only after submission of discharging permission by Agent.
- 8.1.10 Vessels shall be un-berthed only after the payment of all port charges, completion of formalities and issuance of the No Dues Certificate by the Port Authorities and Port Clearance from the customs. The agent who declares the vessel will remain responsible for payment of all marine related dues. No marine services will be provided to any other appointed agent unless he makes advance payment towards the same or gets the approval of the main agent to avail any marine related services.
- 8.1.11 In case any accident takes place on board the vessel in which port personnel / contractor staff are injured, the vessel will be held responsible for the same and will be liable for compensation. The amount of compensation decided by the port will be final.
- 8.1.12 Notwithstanding anything contained above, The Port shall retain the right to prioritize any or all the above conditions depending on new developments / special circumstances which may have changed from what was discussed during the Berth Planning Meeting. Decision of the port on berth planning and allocation will be final and binding on all concerned.
- 8.1.13 "CONDITION OF USE" is a mandatory requirement and is to be filled up, signed, stamped and delivered to the pilot before commencement of Pilotage.
- 8.1.14 Tank cleaning, Purging, Gas Freeing or inerting is not permitted for tanker vessels at berth under normal conditions.

8.2 A vessel may be removed from berth for the following reasons.

- 8.2.1 If the vessel is considered unsafe or hazardous for port safety.
- 8.2.2 If the vessel is equipped with poor and unsafe cargo gear.
- 8.2.3 If the vessel does not correct deficiencies pertaining to safety brought to her notice within the stipulated time.
- 8.2.4 In case the weather deteriorates or is likely to deteriorate.
- 8.2.5 If the stowage of cargo is improper or incorrectly declared.
- 8.2.6 The vessel is under performing as per port norms or idling at the berth without proper justification, the vessel will be un-berthed and applicable shifting charges will have to be borne by the vessel.

8.2.7 Makes a request for early un-berthing.

8.2.8 Has made a wrong declaration.

8.3 Performance of the vessels which are alongside the berth would be continuously monitored up to 08:00 hrs and will be discussed in the Daily Berth Planning Meeting. If a vessel is underperforming, the vessel's agent will be advised in writing to improve the vessel's performance. If by next day 08:00 hrs, the vessel's performance is still found to be unsatisfactory, a notice may be served to the Master to un-berth the vessel. Work stoppages beyond the control of the vessel or the Port will be excluded while evaluating the performance. Reasons such as lack of cargo and documents, poor or uneven stowage, unusually slow and unproductive cargo handling gears will not be accepted as valid reasons for poor performance of the vessel.

8.4 Vessels failing to meet the minimum required norms for loading and discharging will be de-berthed solely at the discretion of the Port.

8.5 The port shall remove a vessel from the berth on vessel account if, the vessel is unable to meet port's productivity norm due to failure of her equipment and the port is not in position to provide shore resource. The shifting of the vessel from berth will however be done only if another vessel arrives and requires the use of that berth.

- A shifting movement means:
 - Physical shifting of the vessel more than 100 mtrs ahead / astern.
 - From one berth to another berth or from one berth to anchorage and re-berth.
- A warping movement means: Physical shifting of the vessel maximum 100 mtrs ahead / astern on the same berth.
- A turnaround movement means: Un-berthing the vessel from its berth and re-berthing it at the same berth on a different side. Pilotage charges will be charged in case of turnaround movement.

9. Free time allowed to vessels prior cargo commencement and after completion.

9.1 A vessel should be ready for commencement of cargo operation in all respect within 3 hours of all fast time and should be ready to sail 3 hours after cargo completion. In case the vessel unable to commence her cargo operation within 3 hours of all fast time and unable to file outward pilot request within 3 hrs of cargo completion, layup berth hire charges shall be applicable.

9.2 If cargo stoppage is more than 2 hours to failure of vessel equipment's or gear, idling at berth or for any other reasons. Lay-up berth hire as per Port Tariff shall be applicable as per conditions laid below.

9.3 Total cargo stoppages should not exceed 2 hours during the entire port stay of the vessel or else lay-up berth hire will become applicable.

- 9.4 Whenever a vessel is given due notice by the Port to vacate the berth on account of either under performance or for safety reasons and the Master of the vessel refuses to vacate the berth after 2 hours of due notice by the Port, the Port will charge 2 times the berth hires as mentioned in the port tariff in addition to berth hire charges. Pilot detention and cancellation charges where applicable will be as per Port Tariff.
- 9.5 LPG vessels should be ready for commencement of cargo operation in all respect within 4 hours of all fast time. In case the vessel cannot commence her cargo operation within 4 hours, layup berth hire as per Port Tariff shall be applicable.

10. Lay-up berth hire

- 10.1 In case of cargo stoppage which is attributable to failure of vessel's machinery and equipment or due to any reason / fault of vessel, layup berth hire will become applicable. The vessel will revert to normal berth hire when the vessel's machinery & equipment are operational or shore equipment deployed for resume the cargo operation on vessel request.
- 10.2 In case, a vessel is on layup berth hire, vessel is Idling due to equipment failure and another vessel arrives and requires the use of same berth, the vessel will be shifted out to anchorage on vessel's / owner / agent account.
- 10.3 Additional stay at berth after cargo completion may be permitted on lay-up charges, if there is no vessel waiting for the berth. The request for additional berth stay at lay-up berth hire should be made at least 3 hours before cargo completion time. Vessel has to vacate the berth within 2 hours of receiving notice if the berth is required by Port or else "Non vacating of berth" charges as applicable will be applied on the vessel.
- 10.4 Layup berth hire charges will not applicable to Country crafts, SPM, HMEL, LNG and STS vessels.
- 10.5 Layup berth hire will not applicable on Tug which has towed with dumb barge into the port for cargo operations provided it is made fast alongside the dumb barge. Layup charges in case of additional stay on berth will be applicable only on the dumb barge on hourly basis. The tug will continue to be charged at normal berth hire rates.
- 10.6 Lay up berth hire will not be applicable if there are cargo stoppages due to bad weather condition/rains unless the cargo was already stopped prior start of bad weather/rains period. The timings will be taken from respective SBU.
- 10.7 Port will not charge layup berth hire charges on vessel which stay on the berth after cargo completion if vessels are receiving bunker / freshwater / waste collection. This will be subject to the following conditions:
 - 10.7.1 There are no vessels waiting for that berth.
 - 10.7.2 The concerned terminal / Marine department should not have planned any maintenance activity on that berth.
 - 10.7.3 The request for additional berth stay should be made at least 24 hours prior cargo completion so that other vessel movements at other berths are not adversely affected.

- 10.7.4 The concerned vessel will get pilot only after other planned vessel movements have been carried out. Efforts will however be made not to unduly delay these vessels.

11. Import / Export voyage in same VCN

- 11.1 As a general rule after completion of discharge operations, a vessel has to vacate the berth for other vessels waiting at the anchorage. If the same vessel is fixed for loading, her arrival time for loading operation will be considered only after she has completed her previous cargo and is thereafter ready to load cargo in all respects.
- 11.2 In case a new VCN is issued upon request, the second call will be treated as a fresh call and all marine dues will be applicable to the vessel.
- 11.3 After completion of Import cargo, if vessel goes outside of the port limits for hold cleaning / operational requirements and coming back to load export cargo in same vessel, then New VCN will be provided for Export cargo operation. All the charges will be applicable as per BPTS.

12. Anchorage charges

- 12.1 Anchorage charges will be applicable from the time of vessel dropping anchor till the time the pilot board the vessel for berthing, for all vessels anchoring within Port limits other than the below.
- 12.1.1 Those vessels which are governed by individual long term Marine services contracts.
 - 12.1.2 SPM vessels which will continue to be charged as per their contracts or the full anchorage rates

13. Documents require in prescribed format through IPOS/ITUP for declaration

The vessel's agent should submit the following documents in the prescribed format through IPOS for vessel declaration prior to physical arrival in Port. The vessel will be considered for berthing only after completion of declaration formalities and submission of pre-arrival documents as per Port Berthing Policy.

13.1 General Documents required for all vessels declaration

- a. Berthing application - MAR/ F/ 003
- b. Vessel & cargo particulars part A - MAR/ F/ 011
- c. Vessel acceptance navigational checklist- Part B
- d. International Tonnage certificate.
- e. International Air Pollution Prevention certificate (IAPP)
- f. Ship particulars.
- g. P&I certificate & Liability for the Removal of Wrecks Certificate
- h. Certificate of Class (IACS class)
- i. Certificate of Registry
- j. Safe Manning Certificate

- k. Documents of compliance
- l. ISM Safety Management Certificate (SMC)
- m. Civil Liability Convention (CLC) 1992 Certificate:
- n. Civil Liability for Bunker Oil Pollution Damage Convention
- o. International ship security certificate
- p. International oil Pollution Prevention Certificate (IOPP)
- q. Load line certificate
- r. Safety equipment certificate
- s. Safety construction certificate
- t. Safety Radio certificate.
- u. Ship sanitization control Exemption.
- v. Ballast water Management system certificate**
- w. Agency appointment letter from Owner of vessel
- x. Pre arrival notices of 5/3/2/1 days, PANS as per ISPS Code requirement

13.2 In addition to general docs following additional documents required for Bulk & break bulk:

- a. Last port draft survey report for fertiliser vessel.
- b. Fertiliser checklist
- c. Pre arrival pipe export stevedoring check list
- d. Stowage Plan.**
- e. Discharge or loading sequence.
- f. IGM to be submitted 24 hrs prior arrival of vessel
- g. Cargo declaration with client details, Requirement shore crane, Forklift
- h. Export General Manifest is to be submitted within 9 days of vessel sailing
- i. Complete Packing list for discharge / Load with Length x Width X Height (CBM) and Metric ton for calculating Package wise FRT (Freight Ton)." In case of Break Bulk cargo, above documents are required to be submitted by the vessel agent before berthing of vessel, both in Excel as well as PDF formats.

Note: The dimension to be considered should be of the biggest package and not of the smaller ones packed in the bigger package. Packing list submitted by the agent will be final. Receivers full details for each package to be submitted to port prior berthing. CIF/FOB value of the cargo for Imports/Exports to be provided by the concerned prior to berthing of vessel. In case of non-submission or incomplete documentation port will be constraint to berth the vessel.

13.3 In addition to general docs following additional documents required for Liquid vessel:

- a. Q-88 (All trading certificates should be valid).
- b. Stowage Plan.
- c. IGM to be submitted 24 hrs prior arrival of vessel
- d. Cargo declaration with client details
- e. Temperature report for heated cargo
- f. Certificate of Origin
- g. Pre-arrival exchange information checklist
- h. MSDS for all cargoes (loading/discharging and transit cargoes)
- i. Export General Manifest is to be submitted within 9 days of vessel sailing
- j. Two valid SIRE certificates**

13.4 In addition to the general docs following additional documents are required for LPG / LNG vessel:

- a. Q-88 (All trading certificates should be valid).

- b. Two valid SIRE certificates
- c. IGM to be submitted 24 hrs prior arrival of vessel.
- d. MSDS for all cargoes (loading/discharging and transit cargoes)

Note : Apart from above documents all compliance of DG Shipping / GMB or any other authorities to be followed by the vessels / vessel agent while vessel calling in Mundra Port limit.

14. Minimum Notice required for filing Pilot request through IPOS / ITUP

| MMPT (Dry, Liquid, LPG and Containers) | |
|---|---|
| Inward Pilot request | Minimum notice 1 hrs 45 minutes from Pilot request time |
| Outward Pilot request | Minimum notice 1 hrs 30 minutes from Pilot request time |
| Pilot Cancellation and amendment can be accepted through email to portopscenter@adani.com or through VHF on Channel 77 to Mundra Marine Control with minimum 1 hrs notice for inward pilot request and 45 minutes notice for outward pilot notice. Only one cancellation and revision will be accepted. Thereafter minimum 2 hrs notice has to be given for revision of pilot request. A vessel whose OWPM & IWPM timing have been amended will be given a pilot only after all other planned movements have been carried out. | |
| WEST BASIN | |
| Inward Pilot request | Minimum notice 2 hrs from Pilot request time |
| Outward Pilot request | Minimum notice 2 hrs from Pilot request time |
| Cancellation and amendment can be accepted for IWPM minimum 1 hour before POB and for OWPM 45 before POB | |
| SPM, STS and LNG Vessels | |
| Inward Pilot request | IWPM to be filed with 6 hrs notice during office hrs (0900 hrs to 1800 hrs) and 18 hrs notice after office hrs (1800 hrs to 0900 hrs). In case of back-to-back vessels (one vessel working at SPM and another vessel to be berthed after casting off working vessel), Minimum 2 hours will be necessary between the times the working vessel to is cast off to the POB time of next vessel. |
| Outward Pilot request | For SPM, STS and LNG Minimum notice of 2 hrs from Pilot request time. |
| Note 1: For Berthing of STS vessels, berthing Pilot will be provided 3 hrs after receiving clearance from loading master however minimum notice as per above will be maintained. Note 2 : Cancellation and amendment of inward pilot memo for SPM and LNG vessels will have to be done at least 3 hours before POB time or else pilot cancellation charge before boarding will become applicable. | |

15. Swapping of Seniority

Swapping of berthing-seniority between vessels may be permitted by the Port provided the agent or agents of the affected vessels and /or the respective cargo interests jointly request the Port for exchange of seniority in the prescribed application form and agree to indemnify the Port against any claims whatsoever may arise there from. The agency which intends to swap the seniority of its vessels must take into consideration other agents whose vessel will be

adversely affected due to swapping of seniority. LOA / Productivity of vessel being swapped will be considered before accepting the swapping request.

16. Shifting of vessels

- 16.1 No Charges shall be levied for shifting of a vessel for Port Convenience. "Port Convenience "is defined to mean the following:
- 16.2 If a working cargo vessel at berth or at mooring point is shifted for port to undertake hydrographic survey work, dredging, repair and maintenance of berth, or such other similar activities whereby shifting is necessitated, such shifting shall be considered as "shifting for port convenience". The shifting made to reposition such shifted vessel is also considered as "SHIFTING FOR PORT CONVENIENCE".
- 16.3 If a working cargo vessel is shifted from berth to accommodate on ousting priority vessels which are exempted from bearing shifting charges, such shifting shall be treated as "SHIFTING FOR PORT CONVENIENCE".
- 16.4 Whenever a vessel is shifted to accommodate another vessel carrying hazardous cargo which needs adjacent berth to be kept vacant for safety reasons is also considered as "SHIFTING FOR PORT CONVENIENCE".
- 16.5 Whenever a vessel is shifted from berth to accommodate another vessel which cannot be berthed at other berths due to draft and LOA restrictions vessel is considered as "SHIFTING FOR PORT CONVENIENCE".
- 16.6 Whenever a vessel is shifted to accommodate another vessel having priority at the adjacent berth and unless that vessel shifts, another vessel cannot be berthed at the adjacent berth due to length restrictions such shifting is also considered as "SHIFTING FOR PORT CONVENIENCE"
- 16.7 Whenever as vessel is shifted to another berth or at anchorage due to operational requirement, "SHIFTING FOR PORT CONVENIENCE".
- 16.8 Whenever a vessel is shifted to accommodate another vessel on ousting priority, the vessel shifted will be required to pay shifting charges.
- 16.9 Similarly shifting charges will also be applicable in the following cases of shifting:
 - 16.9.1 Non-cargo vessel which in any case have to vacate the berth when cargo vessels arrive.
 - 16.9.2 Vessels which are idling at berth without doing any cargo handling operations.
 - 16.9.3 Vessels which are under performing due to reasons attributable to either the vessel or principals.
 - 16.9.4 Vessel vacating the berth due to bad weather/storm – 50% of the Pilotage charges will be applicable.
 - 16.9.5 Vessel vacating berth due to bad weather/storm under Planned/Unplanned cold move - Planned/Unplanned cold move charges will be applicable.

17. Immobilization Permission

If vessel wants to carry out M/E maintenance work during her Port stay the Port will grant Immobilization permission subject to the following terms and conditions on port's discretion. After completion of permitted time, fresh Immobilization requisition has to be filed for completion of the remaining work. The Immobilization should be completed prior to completion of cargo operations. The Master of the vessel should inform Marine Control on VHF Ch-77 prior immobilizing the ships engine and after repairs have been carried out. In case the vessel is unable to sail out after cargo completion due to engine repairs in progress, then layup berth hire will be applicable.

- 17.1 Permission will have to be obtained in writing.
- 17.2 Master to ensure that the vessel remains safely alongside and if required to double up the moorings.
- 17.3 Port will give 4 hours' notice to get the vessel's engine ready in case of emergency.
- 17.4 In case, the vessel is unable to remain alongside the berth for whatever reason, any pilot / tug / mooring crew assistance provided by the Port will be on a chargeable basis.
- 17.5 Due care should be taken by ship's crew in tending the ship's mooring lines, as Mundra Port has strong tidal currents or off shore winds at some of the berths. The vessel will come off the berth in case the mooring lines are not tended properly.
- 17.6 Cancellation of Immobilization request shall be considered only if it is rendered 2 hours after all fast time or else charges will be applicable. If vessel is already at berth at the time of request, then once permission granted the charges will remain applicable.

18. Standard time for cargo commencement and completion

| Sr.No. | Types | Case | Cargo commencement | Cargo completion |
|--------|----------------------------|-----------------|---|---|
| 18.1 | Containers | IMPORT / EXPORT | Cargo commencement takes place after unlashings of containers the first container loaded or unloaded. | After handling of gearbox the last container loaded or unloaded. |
| 18.2 | Bulk | IMPORT | First grab discharge into the hoppers or shore | Full cargo discharge and after removal of all equipment from the vessel. |
| | | EXPORT | First grab discharge into the ship's cargo hold. | After completion of cargo loading, trimming and removal of all shore equipment from the vessel. |
| 18.3 | Break Bulk / Project Cargo | IMPORT | Commencement of cargo Lashing removal. | Full cargo discharge and after removal of all shore equipment. |
| | | EXPORT | Commencement of dunnage Laying in the cargo hold. | After completion of cargo Lashing and removal of all shore equipment. |
| 18.4 | Liquid, LPG | IMPORT | When cargo passes the ships manifold into the shore line. | Air blow completion time and when receiver gives the go ahead for hose disconnection. For LPG vessels Hot Gas completion time. |

| | | | | |
|--|--|--------|---|--|
| | | EXPORT | Commencement time of Cargo pumping from Terminal. | When the vessel is informed to close the manifold valve. |
|--|--|--------|---|--|

SECTION B

19. Berth Parameters, the indicative berth allocation parameters are given in the following table

| Berth | LOA (Mtrs) | Displacement (MT) | Order of priority for Berth allocation | Present Liquid Pipeline Connectivity |
|---|------------|-------------------|---|---|
| MUNDRA MULTI-PURPOSE TERMINAL (MMPT) | | | | |
| B-1 | 295 | 90000 | As per declared policy. Clause D of BPTS page 11. | 1) 2 x 8" dia SS (POL-White Oil/ Chemicals) 2) 1 x 12" dia CS (POL -Black Oil/Bunker) 3) 2 x 12" dia CS (POL -White Oil/ Chemicals) 4) 1 x 12" dia CS (Edible – Non- insulated). 5) 1 x 12" dia CS (Edible – Insulated) 6) 1 x 16" dia CS (POL-White Oil). 7) 1 x 24" dia CS (POL –White Oil). 8) 1 x 24" dia CS (POL –Black Oil) 9) 2x12" dia (MLA) for handling LPG cargoes |
| B-2 | 185 | 40000 | As per declared policy. Clause D of BPTS page 11. | 1) 2 x 8" dia SS (POL-White Oil/ Chemical) 2) 1 x 12" dia CS (POL -Black Oil/Bunker) 3) 2 x 12" dia CS (POL -White Oil/ Chemical) 4) 1 x 12" dia CS (Edible – Non- insulated). 5) 1 x 12" dia CS (Edible – Insulated) 6) 1 x 16" dia CS (POL-White Oil). 7) 1 x 24" dia CS (POL –White Oil). 8) 1 x 24" dia CS (POL –Black Oil) |
| B-3 | 230 | 90000 | As per declared policy. Clause D of BPTS page 11. | 1) 1 x 8" dia SS (POL-White Oil/ Chemical) 2) 1 x 12" dia CS (POL -Black Oil/Bunker) 3) 2 x 12" dia CS (POL -White Oil/ Chemical) 4) 1 x 12" dia CS (Edible – Non- insulated). 5) 1 x 12" dia CS (Edible – Insulated) 6) 1 x 16" dia CS (POL-White Oil). 7) 1 x 24" dia CS (POL –White Oil). 8) 1 x 24" dia CS (POL –Black Oil) |
| B-4 | 230 | 90000 | As per declared policy. Clause D of BPTS page 11. | 1) 1 x 8" dia SS (POL-White Oil/ Chemical) 2) 1 x 12" dia CS (POL -Black Oil/Bunker) 3) 2 x 12" dia CS (POL -White Oil/ Chemical) 4) 1 x 12" dia CS (Edible – Non- insulated). 5) 1 x 12" dia CS (Edible – Insulated) 6) 1 x 16" dia CS (POL-White Oil). 7) 1 x 24" dia CS (POL –White Oil). 8) 1 x 24" dia CS (POL –Black Oil) |
| B-5 | 575 | 180000 | As per declared policy. Clause D of BPTS page 11. | 1 x 12" dia Bunker Line (Black Oil). |
| B-6 | Meters | 180000 | | 1 x 12" dia Bunker Line (Black Oil). |
| B-9 | 794 | 120000 | | General cargo berth, no bunker lines. |
| B-10 | meters | 74000 | | General cargo berth, no bunker lines. |
| B-11 | | 74000 | | General cargo berth, no bunker lines. |

| | | | | |
|---|-------------|--------------|---|---|
| B-12 | 195 meters | 74000 | | General cargo berth, no bunker lines. |
| Barge Berth | 80 | 4200 | NONE | 1 x 12" dia Bunker Line (Black Oil). |
| Mundra SPM | 348 | 360000 (DWT) | NONE | 1 x 48" Dia Pipe Line along with 2 x 16" Dia Floating Hose Connections. |
| HMEL SPM | 345 | 320000 (DWT) | NONE | 1 x 48" Dia Pipe Line along with 2 x 16" Dia Floating Hose Connections. |
| WEST BASIN | | | | |
| WB-1 | 1510 Meters | 266000 | As per declared policy. Clause D of BPTS. | Bunker and fresh water lines not available presently. |
| WB-2 | | 266000 | | |
| WB-3 | | 266000 | | |
| WB-4 | | 321000 | | |
| MUNDRA INTERNATIONAL CONTAINER TERMINAL [MICT] | | | | |
| CB-1 | 630 Meters | 180000 | Any Container vessels + any break bulk vessels subject to availability of berth and acceptance by MICT on FCFS basis. | 1 x 16" dia Bunker Line (Black Oil). |
| CB-2 | | 180000 | | 1 x 16" dia Bunker Line (Black Oil). |
| ADANI MUNDRA CONTAINER TERMINAL [AMCT] | | | | |
| CB-3 | 630 Meters | 180000 | Any Container vessels + any break bulk vessels subject to availability of berth and acceptance by AMCT on FCFS basis. | 1 x 16" dia Bunker Line (Black Oil). |
| CB-4 | | 180000 | | 1 x 16" dia Bunker Line (Black Oil). |
| ADANI CMA MUNDRA TERMINAL PRIVATE LIMITED (ACMTPL) | | | | |
| SB-4 | 650 Meters | 231600 | Any Container vessels + any break bulk vessels subject to availability of berth and acceptance by ACMTPL on FCFS basis. | 1X 14" dia Bunker Line (Black Oil) |
| SB-5 | | 231600 | | |
| ADANI INTERNATIONAL CONTAINER TERMINAL PRIVATE LIMITED (AICTPL) | | | | |
| SB-6 | 1460 Meters | 180000 | Any Container vessels + any break bulk vessels subject to availability of berth and acceptance by AICTPL on FCFS basis. | 1X 14" dia Bunker Line (Black Oil) |
| SB-7 | | | | |
| SB-8 | | 231600 | | |
| SB-9 | | | | |
| LNG | 350 meters | 180000 | As per declared Policy | |

Notes:

- 19.1 The depths around the berths are checked periodically. The maximum permissible draft at each berth is promulgated on monthly basis and issued to Trade.

- 19.2 Non container vessels allocated berth at the container terminal shall vacate the berth for a container vessel which has priority at the berth. Shifting charges for the same shall be borne by the vacating vessel. A minimum of 6 hours' notice for shifting will be given to the vessel.
- 19.3 A minimum safe clearance of 35 meters will be maintained in between vessels.
- 19.4 A Minimum safe clearance of 75 meters is required during berthing of PCC (Car Carriers) While minimum safe clearance of 65 meters is required during un-berthing of PCC (Car carriers).

20. Berth allotment criteria

| BERTHING POLICY | |
|-------------------------------|--|
| Berth- 1 | Priority for LPG vessels. |
| Berth- 2 , 3 & 4 | Priority for Liquid cargo. |
| Berth 5 | Container vessels are accepted basis their berthing windows as agreed between the Shipping Line and the Container Terminal. |
| Berth- 6 | Optional for CT & Dry cargo vessels, Berth will be allocated to dry vessels subject to availability of space at B06 |
| Berth- 9,10,11 & 12 | First Come First Serve (FCFS) subject to conditions mentioned in the Notes. |
| MICT, AMCT, AICTPL and ACMTPL | Container and RoRo vessels are accepted basis their berthing windows as agreed between the Shipping Line and the concerned Container Terminal. |
| WB-1 | Ousting priority for M/s Coastal Gujarat Power Limited vessels. |
| WB-2 | 1) Priority berthing for M/s Coastal Gujarat Power Limited (CGPL) vessels arriving as per binding forecast. 2) In case, CGPL not opting to berth vessel at WB-2, then priority berthing for APL vessels. |
| WB-3 | 1) In case, CGPL vessel opting berth at WB-2, then priority will be given to APL vessel at WB-3. 2) For other cases other than mentioned in 1) The vessels to be berthed on First come First Serve basis. |
| WB-4 | Not Available for cargo operation till further orders. |

Notes:

- 20.1** Tankers arriving from within Gulf of Kutch shall give a minimum of 24 hrs notice of Arrival (NOA) with an indication of the IWPM filing time with 3 hours accuracy.
- 20.2** If the vessel (as per point no- 20.1) arrives outside the 3 hours window or files her IWPM outside the 3 hours window, it will be considered for berthing only after 24 hrs.
- 20.3** The port has capacity and necessary infrastructure to handle 2 steel vessels and 3 bulk vessels at any given time. Decision to accept additional vessels will be taken on case-to-case basis by Dry Cargo Operations Team.
- 20.4** Priority berthing will be given for M/s Welspun Corp Ltd (Export Steel Cargo), the vessel will be accommodated at any of the berths at T-2 and T-3 Terminal subject to berth parameters. Only one priority vessel of Welspun will be considered at a time.

- 20.5** The Port shall not be responsible for any delay in pilotage, berthing, ingress or egress for any reason whatsoever.
- 20.6** The port will not be liable for payment of any damages / claims / delays / detentions / demurrages etc. to vessels, whose berthing is delayed due to berthing of junior vessels which have been given priority in berthing as per their contractual agreements.
- 20.7** A vessel missing her turn at MMPT must provide her readiness within 6 hrs. In-order to retain seniority for berthing. As regards West Basin, the berthing policy as mentioned above will be enforced as the Port has to comply with contractual agreements.
- 20.8** West Basin Seniority of the vessel will be considered as per port discretion if cargo space available less than 80% inside the Port backup yard.

21. Priority berthing guidelines for liquid tankers

For Tankers: Priority berthing for tankers will only be accepted if they will be occupying the berth for-less than 26 hours. The time will be counted from first line ashore to all cast off.

- 21.1** Priority berthing will be allowed for up to 2 vessels at a time on FCFS basis.
- 21.2** Priority berthing is only applicable for dedicated Liquid cargo berths.
- 21.3** Any vessel requesting priority berthing is required to give at least 24 hrs notice basis ETA at Mundra Port limit. No request for priority berthing will be accepted, if the notice is less than 24 Hours.
- 21.4** Once a vessel has requested priority, the same can be cancelled or withdrawn up to 12hrs before her arrival ETA at the Port Limit without attracting priority cancellation charges.
- 21.5** Priority cancellation charge of will be levied as per tariff in case the vessel cancels her priority berthing less than 12 hrs from her last declared ETA.
- 21.6** If a vessel berths without superseding any other vessel, priority berth charges will not be applicable to the vessel.
- 21.7** Port will not keep berth vacant for any priority vessel and seniority sequence will be maintained as usual till arrival of priority opted vessel. The vessels priority starts from her arrival time and accordingly she will be given first preference amongst the waiting vessels. The vessel's ETA must be updated every 06 hrs in the last 24 hours.
- 21.8** The next vessel seeking priority will be accorded the same 26hrs after un-berthing of 2nd priority vessel.
- 21.9** The vessel which avails priority berthing will be required to pay 100% additional berth hire as applicable as per prevailing Port Tariff. In case of vessels having import as well as export cargo, the following will apply:
 - 21.9.1** Vessel's berth stay cannot exceed 26 hours as given above.
 - 21.9.2** If there is another vessel waiting for berth, the priority vessel will shift out on completion of the cargo for which priority berthing had been sought.

21.9.3 The vessel, berthed on priority, after shifting out will re-berth as per her new seniority as per BPTS.

21.9.4 In case a vessel which is berthed on 'priority terms' is unable to complete the cargo operations and sail out within 26 hours, then Layup berth hire charges as per port tariff will be applicable in addition to 100% priority berth hire charges mentioned in BPTS. In case the vessel is delayed beyond 26 hours for the fault of the vessel, the Port reserves the right to shift the vessel to anchorage at her cost, subject to another vessel waiting for occupying the berth. The vessel / agent / shipper / consignees agree to give an undertaking to pay the charges for priority berthing in advance. Priority will be accorded as per Port's discretion. In case of any dispute, the Port's decision will be final.

22. Berthing / Un-berthing guidelines for vessels

| Berthing: | |
|---------------------|--|
| B-1, B-3, B-12, LPG | a) POB: At any time. (Same for LPG). (EXCEPT FROM 01:30 to PRINTED TIDE TIME) (E.g. = Tide 1800, POB cut off 1630 hrs. Next POB 1800 hrs) |
| B-2 | POB 30Mins after HW to 2Hrs before LW. |
| B-4 | a) P/S A/S : POB - PRINTED LW to 2Hrs before HW. b) S/S A/S : POB at printed HW to 2Hrs before printed LW. Max permissible LOA= 190 m. |
| B-5, B6 | a) LOA < 100 m : Berthing using single tug, POB will be 2Hrs 30Min before LW to HW. b) LOA <= 210 m with Draft <= 12m : POB anytime c) LOA > 210 m with any Draft : POB 2 Hrs before to 1 Hour before HW and 1Hr 30Min before to 30 Min after LW subject to 10% UKC. d) LOA > 245 m with draft >= 13m : POB will be 2 hours before HW. e) LOA > 100 m to 210m and draft >12 m: POB 2Hrs 30Min before LW to 1 Hour before HW CG/Navy Craft: POB 2Hrs 30Min before LW to 1 Hour before HW E.g= LW 1200 HW 1800, Berthing window 0930 to 1700 Hrs. FOLLOW AMCT/MICT GUIDLINES FOR B5 & B6 CONTAINER VESSELS. |
| B-9 | a) P/S A/S, LOA < 210m : POB from HW to 2Hrs before LW. b) S/S A/S (LOA and draft as per berth parameters): POB from LW to 2Hrs before HW. |
| B-10,11 | a) POB - At anytime (EXCEPT FROM 02 hr TO PRINTED TIDE TIME) (E.g. = Tide 1800, POB cut off 1600 hrs, next POB 1800 hrs.) |
| T2, MICT & AMCT | a) LOA <= 305 m : POB any time. b) LOA > 305 m tide range <= 5 : POB any time. c) LOA > 305 m with tide range >5: POB 02 Hrs 30 Min before to 30 Min after printed tide subject to 10% UKC. c) PCC BERTHING : If SW wind more than 15 kts , POB 01:30 Hrs before HW to printed LW .(CONVERSE FOR "NE"ly WIND) |
| AICTPL & ACMTPL | a) LOA <= 340 m : POB any time. b) LOA > 340 and LOA<370m with Tide range <= 5.0m : POB anytime. c) LOA > 340 and LOA<370m with tide range >5.0 m: Anytime except 30Min after HW to 02 Hrs 30 Min before LW. |

| | |
|--------------------------|--|
| | <p>d) LOA >370 m with tide range ≤ 5.0m : POB any time except 30 Min after HW to 02 Hrs before LW.</p> <p>e) LOA >370 m with tide range > 5.0m : POB 2 hours before Printed tide to 30 Min after Printed tide.</p> <p>f)CG/Navy Craft:POB - 01 Hr 30Min to 30. min before printed tide.</p> |
| West Basin | <p>a) LOA ≤ 230 m: POB anytime</p> <p>b) Draft ≤ 14.5 m : POB 2.5 hrs before to 30 min before printed tide subject to 10% UKC.</p> <p>b) Draft > 14.5 m : POB 2.5 hrs before to 1.5 hr before printed tide subject to 10% UKC.</p> <p>c) For Bunker Barge (AEL): POB 2hrs before to printed tide time.</p> |
| SPM | <p>a) SPM Berthing: Daylight hours only.</p> <p>b) If wind and tide from same direction or adverse wind ≤ 15 Knots: SPM POB from 30Min after printed tide to 03Hrs before next tide or sunset whichever is earlier.</p> <p>c) If wind and tide from opposite direction and adverse wind speed > 15 Knots.</p> <p>i) POB time to be 1Hr after change of tide, if tidal range > 2.5 mtr.</p> <p>ii) POB time to be 1Hr 30Min after change of tide if tidal range ≤ 2.5 mtr. IOCL Tanker- Jetty leaving 50 Min before POB</p> <p>HMEL Tanker- Jetty leaving 65 Min before POB</p> <p>Mooring to SPM = Mooring to be done up to wind speeds of 30 knots, when direction of the wind is forward of the beams and up to 20 knots when wind is from quarters or right astern when on final approach.</p> <p>Wind speed limits while discharging at the SPM.</p> <p>A) STOP CARGO - AT 30 KNOTS. B) CAST OFF FROM SPM - AT 35 KNOTS.</p> |
| STS | <p>a) STS Berthing: Daylight hours only.</p> <p>b) If wind and tide from same direction or adverse wind ≤ 15 Knots : STS POB from 1 hour after printed tide to 02 Hrs before next tide or sunset whichever is earlier.</p> <p>c) If wind and tide from opposite direction and adverse wind speed > 15 Knots: STS POB from 1.5 hour after printed tide to 02 Hrs before next tide or sunset whichever is earlier.</p> <p>d) Number of Tugs - 2</p> <p>Note: The STS berthing should not be done/cargo to be stopped and vessel to be unmoored, if wind speed is > 25 knots or swell height exceeds 1.8 metres</p> |
| LNG | <p>a) LNG Berthing: POB : Anytime (EXCEPT FROM 02:00 to PRINTED TIDE TIME)</p> <p>(E.g. = Tide 1800, POB cut off 1600 hrs. Next POB 1800 hrs)</p> <p>A) Berthing - 25 KTS B) Stop Cargo - 30 KTS c) Cast Off - 35 KTS</p> |
| Un-berthing: | |
| B-1, B-3, B11, B-12, LPG | a) POB - Any time (Same for LPG Tanker) |
| B-2 | <p>a) POB 01Hr before printed HW to 01Hr before printed LW (With Favourable wind or with adverse wind ≤ 20 Kts).</p> <p>b) With Adverse Wind > 20 Kts or draft > 9 m : POB 30 mins after HW to 01 hr before LW.</p> |
| B-4 | <p>a) P/S A/S: POB 01Hr before printed LW to 01Hr before printed HW</p> <p>b) S/S A/S : POB anytime.</p> |
| B-5,6 | <p>a) Draft ≤ 13 m : POB anytime subject to 10% UKC being available during the vessel transit.</p> <p>b) Draft > 13 m: tide range ≤ 5.0 m: POB any time. If tide range > 5.0 m than POB 02Hrs 30Min before HW to 1Hr before HW subject to 10% UKC being available during the vessel transit.</p> |
| B-9,10 | a) P/S A/S : POB anytime |

| | |
|----------------------------|--|
| | b) S/S A/S: POB 1 hour before LW to 1 hour before HW. |
| MICT, AMCT & AICTPL ACMTPL | a) POB - Any time subject to 10% UKC being available during the vessel transit |
| West Basin- 1,2,3,4 | a) LOA <= 230 m in ballast : POB 2Hrs 30Mins before to 30 mins after printed tide. b) LOA > 230 m and Draft <= 13 m : POB 2Hrs 30mins before printed tide to printed tide subject to 10% UKC during vessel transit. c) LOA > 230 m and Draft > 13 m : POB 2Hrs before printed tide to 30 mins before printed tide subject to 10% UKC during vessel transit. d) For Bunker Barge (AEL): POB 2hrs before tide to printed tide time. |
| SPM, LNG, STS | Unberthing - any time |

IV. Marine Tariff

| A. PORT DUES: | | |
|--|---|---|
| \$ 0.065016 Per GT of Vessel [Except SPM vessels] / Per VCN. | Minimum Charges \$ 330 per vessel is applicable. (Port Dues is payable per VCN and is valid for a maximum of 15 days) | |
| B. PILOTAGE CHARGES PER GT OF VESSEL : | | |
| \$ 0.819521 per GT, for vessels with GT less than 10,000. \$ 0.967046 per GT, for vessels with GT 10,000/- and above. | Minimum \$ 2460 | For vessel up to 3000 GT. |
| | Minimum \$ 7685 | Vessel from 3001 - 15000 GT |
| | Minimum \$ 15370 | Vessel from 15001 and above |
| | 1.Pilotage charges Includes one Berthing and one Un-berthing. 2.For Mediterranean mooring, all tugs used for berthing/unberthing will be charged as per actuals in addition to the pilotage charges. | |
| B.1 : FUEL SURCHARGE | | |
| Fuel Surcharge on Pilotage | W.e.f. 1st July'2022, the revised rate for fuel surcharges is available on our website under "Trade Notices" section, which Port can be accessed through https://www.adaniports.com/Ports-and-Terminals/Mundra- /download . | |
| B2. PILOT ATTENDANCE CHARGES : | | |
| Pilot Attendance Charges | \$ 300 per hr | When a pilot is required to stay on board the vessel on request of the Master or when the port decides to post a pilot for safety of the vessel / port. |
| B3. PILOT EXEMPTION CHARGES | | |
| Pilot Exemption Charges | \$ 900 / Exemption Certificate (Maximum validity 30 days) | |
| C. MOORING CHARGES | | |
| \$ 0.0410 Per GT Per VCN (Minimum Charges \$ 210) | Mooring charges is not applicable to LNG, SPM, STS and vessels not using berth facilities. | |
| D. SUSTAINABILITY CHARGES | | |
| \$ 0.03 PER GT PER VCN (Minimum charges will \$ 200) | Applicable to all vessels calling mundra Port | |
| E. PORT ENVIRONMENT PROTECTION SAFETY AND DREDGING CHARGES | | |
| USD: 400 Up to 10000 GT USD: 600 10001 to 30000 GT USD: 800 More than 30000 GT | Charges applicable on Bulk, breakbulk, Liquid, RO-RO, Gas carriers, MICT (DPW) berths and arrives at anchorage/berth for miscellaneous activities and will be charged under VRC to VOA. | |

| F. BERTH HIRE CHARGES | |
|--|---|
| \$ 0.009821 per GT per Hour (First line ashore to All cast off) | Minimum Charges \$ 690 per day is applicable. |
| G. LAY UP BERTH HIRE : | |
| Lay up charges (First line ashore to All cast off) is same rate as berth hire and applicable in addition to the berth hire. Minimum berth hire charges are applicable for those vessels which call Mundra Port purely for lay-up berth hire) | <ol style="list-style-type: none"> 1.1 If vessel unable to commence cargo within 3 hrs of all fast and unable to book OWPM for sailing within 3 hrs of completion time, lay-up berth hire becomes applicable after free times allowed to the vessels as per Point no. 9. 1.2 Lay Up berth hire can be granted on sole discretion of port subject to availability of berth. 1.3 If vessel exceeds granted lay-up time, then the vessels will be shifted out at her own cost. Lay-up berth hire charged in addition to normal berth hire for the duration that the vessel requires the use of the berth but is not carrying out cargo operations. 1.4 The vessel is allowed to stay on the berth on payment of Layup berth hire provided the vessel agent has made an advance request for the same and there is no vessel waiting for that berth. Berth will be provided subject Port discretion. 1.5 In case cargo stoppages more than 2 hours during entire operation. Lay-up berth hire will be applicable. 1.6 LPG vessels if unable to commence cargo within 4 hrs of all fast and unable to book OWPM for sailing within 3 hrs of completion time lay-up berth hire becomes applicable. |
| H. NON BERTH VACATING CHARGES: | |
| Non berth Vacating charges: 3 time of the normal berth hire as mentioned in the port tariff point no. E. This charge is in addition to normal and Lay-up berth hire charges. (Minimum berth hire charges will be applicable) | Whenever for any reason Port requires vacate the berth, the port will give 2 hrs notices to vacate the berth, If vessel fails to vacate the berth then Non berth vacating charges will be applicable. |
| I. PRIORITY BERTHING CHARGES FOR LIQUID VESSELS | |
| \$ 0.009821 per GT per Hour (First line ashore to All cast off) | <ol style="list-style-type: none"> 1. Liquid tankers which avails priority berthing will be required to pay priority berthing charges and it will be in addition to the berth hire. All terms and condition will be applicable as per the BPTS page 26. 2. Priority cancellation charges for liquid tankers \$ 614.04 Will be levied in case the vessel cancels her priority berthing less than 12 hrs from her last declared ETA. 3. In case a liquid tanker which is berthed on 'priority terms' is unable to complete the cargo operations and sail out within 27 hours, then Layup berth hire (\$ 0.009821 per GT per hour) as per port tariff will be applicable in addition to 100% priority berth hire charges mentioned in BPTS. |

J. ANCHORAGE CHARGES

| | | |
|------------------------------|--|--|
| \$ 0.001020 per GT per hour. | Anchorage charges will be applicable from the time of vessel dropping anchor till the time the pilot board the vessel for berthing, for all vessels anchoring within Port limits other than the below: | |
| | 1.1 | Those vessels which are governed by individual long term Marine Services Contracts. |
| | 1.2 | SPM vessels which will continue to be charged as per their contracts or the full anchorage rates. |
| | 1.3 | Drifting within the port limit is generally not permitted. Drifting on case-to-case basis may be permitted by Mundra port control. Vessel drifting more than 3 hours within the port limit will be charged, anchorage time will be considered from the time of vessel arrival till POB time. |

K. BERTHING PROCESS CHARGES:

| | | |
|--|---------|---|
| Pilotage Cancellation Charges | \$ 750 | If cancelled within 1.00 hrs from nominated pilot Boarding. In addition to cancellation charges, Tug charges will be applicable as per actual usage if tugs are mobilized as per clause number V. |
| | \$ 1000 | If cancelled after pilot boarding. In addition to cancellation charges, Tug mobilization hourly charges will be applicable as per clause number V. |
| Pilotage Detention Charges before boarding | Nil | Up to 30 minutes delay from the nominated pilot boarding. |
| | \$ 1500 | For subsequent delays on a slab of 30 minutes |
| Pilotage Detention Charges after boarding | \$ 1500 | Delay in approach due to any reason / fault of vessel more than 15 minutes detention charges will be applicable. For subsequent delays on a slab of 30 minutes. |

L. UN-BERTHING PROCESS CHARGES :

Vessel should be ready in all respect for sailing at the nominated Pilot boarding time. In exceptional cases, a maximum delay up to 15 minutes after Pilot boarding time will be allowed if the unberthing of the vessel is delayed beyond 15 minutes after POB timing due to non-readiness of the vessel, pilot detention charges will become applicable for the entire duration of delay including first 15 minutes.

| | | |
|-------------------------------|---------|--|
| Pilotage Cancellation Charges | \$ 600 | If cancelled within 45 minutes from nominated Pilot boarding. In addition to cancellation charges, Tug charges will be applicable as per actual usage if tugs are mobilized as per clause number V |
| | \$ 1000 | If cancelled after pilot boarding. In addition to cancellation charges, Tug charges will be applicable as per actual usage as per clause number V |
| Pilotage Detention Charges | \$ 600 | Upto 30 minutes delay from the nominated pilot boarding time till commence work |
| | \$ 1500 | For subsequent delays on a slab of 30 minutes. |

Note: Pilot cancellation and detention charges will not be applicable if the vessel is cancelled or delayed due to cold move / bad weather condition, and it should be approved by concern HOD.

M. SHIFTING / TURNAROUND CHARGES

| | | |
|-------------------------------|--------------------------|--|
| Shifting & Turnaround Charges | Same as pilotage charges | However minimum pilotage charges will be applicable as per point B page 29 |
|-------------------------------|--------------------------|--|

Note : 50% Pilotage charges will be applicable if Port decides to shift the vessel from berth due to bad weather & force majeure incident. Final decision of shifting the vessel will be as per Port's discretion taking into consideration the safety of port /vessel/crew, weather forecast etc.

N. WARPING CHARGES PER GT OF VESSEL :

| | |
|-----------------|------------------|
| Warping charges | 50 % of pilotage |
|-----------------|------------------|

O. CARGO LIGHTNING CHARGES – NOT APPLICABLE

P. DUMB BARGE :

| | |
|------------------------|--|
| \$ 2000 per VCN | <ol style="list-style-type: none"> Port dues and pilotage charges will be additional. Pilotage will start only when the barge is secured as a hip tow to the towing tug. If LOA is more than 70 mtrs and beam more than 25 mtrs, then acceptance will be on case-by-case basis. All barges must have a minimum of 6 mooring lines of adequate length i.e. minimum length of 40 mtrs with eye at one end. The agent must also arrange for 6 personnel to be placed on the barge for mooring operations. |
|------------------------|--|

Q. VESSEL DEFICIENCIES:

| | | |
|---|------------------------|--|
| Restricted main engine power | \$ 2000 per Movement | Vessel unable to provide 80% of rated M/E RPM. |
| Unsafe pilot ladder boarding / Disembarking arrangements. (Fine will be levied for each such occurrence.) | \$ 500 Per incident | In case of unsafe pilot boarding / Disembarking arrangements, poorly maintained pilot ladder or inability to rig combination ladder when freeboard of vessel is greater than 9 meters. |
| Non-functional critical navigation Equipment which affects safe berthing / un-berthing. | \$ 300 per Movement | Vessels with non-functional critical navigational equipment such as GPS, GYRO, Radar, Speedlog |
| Charges for Failure to report critical equipment Deficiency in advance. | \$ 500 per incident | Berthing / Un-berthing of vessel liable to be cancelled if in port's opinion same is considered unsafe. |
| Failure of mooring winches, windlass or capstan during berthing / un-berthing operations. | \$ 300 per failure | |
| Wrong declaration of draft which can jeopardize safety of vessel and Port assets. | \$ 500 per declaration | In case of wrong declaration of arrival / departure draft. |
| <ol style="list-style-type: none"> Garbage regulation violation Charges for wrong hoisting of Indian flag or soiled, poor condition. Cargo falling overboard, Non-compliance with port regulations. | \$ 500 per incident | |

| | | |
|--|---|--|
| Anchor missing, Single Anchor Missing / anchor fluke damage | \$ 300 applicable per movement | An additional Tug will be applicable to Berthing vessels if both anchors are missing. |
| R. TUG / BOAT HIRE CHARGES : | | |
| Tug hire for transportation (per trip). | \$ 1800 Minimum charges for 3 hrs. | Minimum charges \$1800 for 3 hours will be applicable and \$ 600 for every subsequent hour thereafter. If the same tug is used by two different parties for different vessels, then each party to pay the said charges. (Maximum 10 persons at a time) |
| Tug hire charges for Ship's Store / spares supply charges at anchorage | \$ 3800 for minimum 3 hours \$ 600 for every subsequent hour | 1. Not applicable for Quantity less than 500 kg. 2. Quantity upto 5 MT. Excess of 5 MT, USD 200 per ton will be applicable. 3. Maximum quantity not allowed more than 10 MT per trip. |
| Service boat (per hour). | \$ 250 | Allowed at alongside berth only during fair weather. |
| <p>Note: If tug is hired for medical purpose (passenger/crew injury) then charges for same will be borne by the vessel agent.</p> <p>The availability of tugs for transportation of passenger is not guaranteed as vessel movements have priority over such request. The Port shall not be responsible to the hirer for any loss or damage or injury to life or property arising directly or indirectly from the use of the tugs or delay in supply of the tugs or due to the failure of the tugs at any stage during the period of hire. The hirer shall indemnify the Port against all loss or damage or injury to life arising directly or indirectly from the use of the tugs during the period of the supply on hire to any property belonging to the port including the tugs or to any other person or property. The liability of the hirer shall not be affected by the fact that such loss or damage or injury to life or property may have arisen due to any act or default of any employee of the Port.</p> | | |
| S. COLD MOVE CHARGES : | | |
| 1.1 Planned Cold Move | Planned Cold move for a berthing vessel will be carried out only with prior approval of the concerned agency. However, no prior approval will be necessary for cold move of a vessel which is already at the berth. Port decision to vacate the berth (to accommodate any waiting vessel) will be final. Charges for each process of berthing / un-berthing / shifting, cold move charges will be in addition to the Pilotage charges. Planned cold move charges will be as given below. All Tugs used for planned cold move will be charged on hourly basis as per port tariff. | |
| | Planned cold moves are subject to port management discretion. Cold move charge as at the rate of 3 times the pilotage charges (However minimum pilotage charges will be used for calculation.) | |
| 1.2 Un planned Cold Move | If the vessel engine or steering gear fails to respond for any duration of time at any point of the berthing / un-berthing / shifting / warping manoeuvre (irrespective of the fact whether movement is on vessel/Agent or on port account), the same will be treated as a cold move and charged to the vessel/agent. Additional tugs if used for the movement will be charged as per port tariff on an hourly basis. Cold move charge is in addition to the normal Pilotage charge. | |
| | Unplanned cold move charge as at the rate of 1.5 the pilotage charges (However minimum pilotage charges will be used for calculation.) | |
| T. PIPE LINE CHARGES FOR LIQUID TANKERS | | |

| | |
|---|--|
| \$ 0.0373 per MT | Pipeline usage charges applicable on all Liquid cargo Vessels calling at Mundra other than for Vessels which are governed by long term contractual agreements such as HMEL, IOCL & HPCL. |
| U. IMMOBILIZATION AND ADDITIONAL CHARGES AS PER REQUIREMENT : | |
| \$ 300 for the first 12 hrs | <p>Immobilization permission will be granted at port's discretion. An immobilization charge for the first 12 hrs is payable, and thereafter at the rate of \$ 150 per 12 hours slab. Failure to take prior approval will result in additional charges as per note 2 of Page 36.</p> <p>Note:</p> <ol style="list-style-type: none"> 1. Immobilization charges will not be applicable if same is carried out at anchorage. 2. Cancellation of Immobilization request shall be considered only if it is rendered 2 hours after all fast time or else charges will be applicable. If vessel is already at berth at the time of request then once permission granted the charges will remain applicable. |
| V. ADDITIONAL TUG HIRE CHARGES : | |
| \$ 1000 Per Hour per Tug | <p>Tug hire charges for any activity (berthing / un-berthing / shifting /warping / tug assistance at berth) other than personnel transfer.</p> <p>In case of bad weather tug assistance will be provided on chargeable basis for any activity.</p> |
| \$ 2000 per hour per tug | For Escorting/Standby for towing operation outside port limit jobs subject to MMD and necessary approval |
| \$ 5000 per hour per tug | For towing or engaged in salvage operation of any type of vessels outside port limit jobs subject to MMD and necessary approval |
| Note:- Tug start and Finished time will be applicable from tug berth to tug berth, Charges applicable as per total tug running hours and inclusive of Fuel cost | |
| W. CHARGES FOR OIL SPILL POLLUTION RESPONSE. | |
| \$ 35100 Per Day | Spillage above 500 Ltr. USD \$35100 + charges as per actuals based on resources mobilised. |
| \$ 5000 | Spillage 100 Ltr to 500 Ltr. Content clean up within mundra port harbour + charges as per actuals based on resources mobilized. |
| \$ 2000 | Spillage less than 100 Ltr. Content clean up within ship's length + charges as per actuals based on resources mobilized. |
| X. TARIFF FOR BOLLARD PULL TEST : | |
| Bollard Pull Test | <p>a. \$ 2700 for tugs up to 100 tons.</p> <p>b. \$ 5400 for tugs above 100 to 150 tons.</p> <p>This is inclusive VRC charges and bollard pull charge. (Berth stay of 12 hrs inclusive of Bollard pull test).</p> |
| Y. TARIFF FOR DIVING OPERATIONS : | |
| 1.1 Diving charges | \$ 4400 for 4 hrs. Thereafter 1500 for subsequent hours. plus DSV /Tug will be charges \$ 1000 per hours for normal diving operations assistance (Diving will only be done during slack tide). |
| 1.2 Videography Charges | \$ 1800 per hr in addition to tug hire charges as above. |
| 1.3 Diving services by outside agency | <ol style="list-style-type: none"> a) License Fee of \$ 800 per vessel per day. b) If videography done by external agency, then \$ 500 will be applicable in addition to license Fee. c) The external agency should have certified divers. d) In case a Service boat is required for carrying out diving operation on a ship which is alongside, the charges for the same will be \$ 250 per 1 per hour. If Tug boat is used it will be charged \$ 1000/hr |

Note: External diving agency /divers should submit valid diving license to POC. Prior starting diving operations, Permission from Marine control is to be obtained.

Z. MISC SERVICE CHARGES:

| | | | |
|---|---|-------------------|--|
| 1. | Creation of request in IPOS/ITUP for NDC, Services and voyage request for Declaration behalf of agent. | \$ 50 | Per request [exception for new vessel agent's first five vessels] |
| 2. | Late declaration of vessel/None submission of documents by vessel: | NA | |
| 3. | Security Guard | \$ 100 | Per 8 hrs shift /per Guard. (Onboard vessel) |
| 4. | Gangway Security Guard | \$ 100 | Per 8 hrs shift /per Guard. |
| (i) Shift time: 0700 hrs to 1500 hrs (ii) 1500 hrs to 2300 hrs (iii) 2300 hrs to 0700 | | | |
| 5. | Applying NDC for wrong VCN | \$ 100 per VCN | |
| 6. | Oil rags removal & Disposal | \$ 450 | Per CBM |
| | Garbage collection at berth | \$ 250 | Per Trip |
| | Bio Medical waste | \$ 150 | Per collection |
| | Sewage collection | - | charges case to case basis |
| | Noxious liquid substances | - | charges case to case basis |
| | Garbage collection at Anchorage (Quantity not to exceed 5 m ³ /per trip) | \$ 2050 | Including Tug charges for maximum 3 hours and \$ 400 for every subsequent hour. |
| | a. The request for garbage collection should be placed 24 hours prior berthing. Garbage collection requests with less than 24 hour notice prior berthing will be serviced on the basis of availability of resources. b. Garbage collection will be done only during day light hours (0900-1700). c. Garbage collection at anchorage will be done subject to availability of tug. d. Hydra will be required at berth for off-loading garbage from the tug and same will be charged as per port tariff. e. Garbage of food waste will not be collected if it is found to be infested and / or with bad odour. | | |
| 7. | Gangway (Request to be made prior berthing). (ship's responsibility to rigged gangway safety net) | 150 | Per calendar day. |
| | Gangway Extension ladder at west basin | \$ 75 | Per calendar day. |
| 8. | Hydra | \$ 250 for 4 hrs. | Thereafter \$ 75 for every subsequent hour |
| 9. | Crawler Crane | N.A | Service not available |
| 10. | Mineral Water Supply | \$ 15 | Per MT, Minimum 20 MT Quantity will be supplied. |
| | Fresh water at berth | \$ 7 | Per MT |
| | Fresh water at anchorage [Only in case of urgent requirement] [Charges for maximum 4 hours and \$ 400 for every subsequent hour thereafter including freshwater charges] | \$ 2340 per trip. | Quantity that can be supplied at Mundra anchorage is about 20 MT per trip depending on tugs pumping capability. Port will endeavour to supply FW as close as possible to 20 MT. If in case quantity supplied in excess of 20 |

| | | | |
|---|---|---|---|
| | | | MT then additional quantity will be charged as \$ 7 per MT. |
| | (Request should be raised with a notice of 24 hrs. Quantity as determined by the port will be final) | | |
| 11. | Permission for tank cleaning of HFO Tank/Cargo tank from the recognise vendors | | \$ 1000 per permission per Tank |
| 12. | Permission for cleaning of spillage cargo onboard / De-mucking of Ballast tank through external agency. (Non-hazardous cargo) (Gate entry for labour will be addition to the above) | | USD 500 per permission. |
| 13. | Magnetic Compass adjustment through port including compass adjuster fees. | | a. \$ 600 per vessel. b. Tug charges will be charged as per tariff. |
| 14. | Hot work permission | \$ 100 | Per 4-hour slab (minimum) |
| 15. | Shore Generator for Welding Work | N.A | |
| 16. | Ambulance Charges (Limited to Mundra Port Premises) | \$ 100 | If used for medical purpose (passenger/crew injury) same will be borne by the vessel agent. |
| Note 2: A vessel will not undertake any activity which requires prior permission & payment of charges to the Port. Violation of the above will affect additional charges which will be thrice the charges which are applicable for that service. | | | |
| 17. | Invoice revision | \$ 100 | Per cancellation of Invoice. |
| 18. | Separate / Spilt Invoice charges | \$60 | Per Invoice |
| 19. | VCN Cancellation | \$ 25 | Per VCN. |
| 20. | Any query regarding final invoice, to be raised / initiated within 60 days of final invoice date else charges will be applicable. | \$ 100 | Per VCN. |
| 21. | Permission for vessel name change / draft mark change on ship's hull within port limit | \$ 500 | Note – painting done by external vendor, Gate entry charges will be applicable in addition to USD 500 |
| 22. | Photography Videography through the recognised port vendor | \$ 1000 per 4 hours | Subject approval port discretion |
| Note- The charges for Marine entry passes will be applicable to all registered Vessel Agents, Contractors, Vendors, and Surveyors other than Adani contract staff. | | | |
| 23. | Cherry Picker (Subject to availability) | Rs. 2500/- | Per hour for equipment |
| | | Rs.4000/- | Per Shifting |
| 24. | Bunker Handling Charges | Collect by Liquid from third party vendor | |
| 25. | 100 MT crane capacity crane on barge Hire Charges | Crane barge charges \$ 500 per hours from mobilisation to Demob | |
| | | For towing crane barge Tug hire charges \$ 1000 per hour in addition to crane barge hire, charges applicable other than salvage operations. | |

| | | | |
|-----|---|-----|---|
| 26. | Mooring Ropes | N.A | |
| | Gate entry permission charges for on-board workshop, repairing and other activities. | | |
| | <ul style="list-style-type: none"> a. For repairing of on-board ship's equipment b. Gate In/Out permission for Landing gears / equipment / Line seal / Stationary from ship. (Custom permission to be provided for Gate in/out material) c. Transshipment permission for supply of goods like spares / ships equipment / medicines. d. Provision supply to vessels per shipping bill gate entry. e. Gate entry permission of labour/technician for workshop onboard i.e diving, cleaning, repairing, fumigation, etc. (Stay onboard permission mandatory for all type of workshop onboard valid till vessel stay) f. Permission for the external equipment entry in Port for cargo operation of other miscellaneous activities | | INR 10000/- per transaction |
| 27. | Note: <ul style="list-style-type: none"> a. Only Port authorized ship chandlers will be permitted for supply onboard. b. If a registered vessel agent is nominated by the vessel owner to deliver stores to their vessel, the activity will be permitted subject to submission of appointment letter from the principals. No license fee will be charged in such cases; however, ship chandelling charges will be applicable as is the case for registered ship chandlers. c. If in case, after completion of gate formalities at Port, vessel master rejects the supply or ship chandlers are unable to complete supply due to any reason prior to sailing of vessel, in that case neither the charges will be refundable, nor it will be adjusted in the next supply which may please be noted. d. Ship chandelling charges will not be applicable to supply of BA charts and medicines up to 25 kg. e. All ship chandlers / shipping agent has to follow Port safety rules and SOP during the supply activity. In case of non-compliance of SOP, Port may cancel the ship chandling licence immediately. | | |
| 28. | IMDG: Class 1 & 7 cargo is not acceptable for handling at Adani port. It may be permitted in transit if it is approved by Govt of India. 1. Undertaking letter as per format of the port from the shipping line. 2. Approval letter from Department of Defence Production, Ministry of Defence. 3. Permission from Atomic Energy Regulatory Board (AERB) for class 7. | | USD 2000 per day (Including Fire tender and security standby arrangement) Time will be consider as per FL-berthing to LL-unberthing) |
| 29. | Crew change Facilitation charges | | USD 20 Per crew change |
| 30. | Annual Agency Registration charges. | | Rs. 20000 per financial year for new Registration. Rs. 15000 per financial year for renewal registration. Rs. 50000 per financial year for Fast Registration (within 7 days) Rs.5000/- Late payment charges for renewal registration |

| | | |
|-----|---|---|
| 31. | Permission of cargo hold washing and retention onboard within Port limit. | USD 500 per permission |
| 32. | Permission for Lifeboat Lowering within Port Limit | USD 100 per activity |
| 33. | Port Facility charges | Case to case basis depends on the complexity of operations. |
| 34. | Anchor Retrieval charges | Actual cost of resources involved including Diving, Tugs, Survey, etc or \$ 30000 whichever is more . |
| 35. | Port Doctor Consultation | \$ 50 per visit |
| 36. | Hatch cover / Pontoon landing (For Dry cargo vessel) | \$ 100 per hatch cover / pontoon |
| 37. | Mooring winches charges | N.A |
| 38. | Laser Range finder | \$ 100 per VCN |
| 39. | Sludge / slop removal charges | As per commercial contract |
| 40. | Sanitization of vessel gangway | N.A |
| 41. | Tug boat sanitization charges | \$ 200 per trip |
| 42. | Vaccination charges for use of port facility | N.A |
| 43. | Failure to report stowaway incident to port | \$ 1000 per Incident |
| 44. | Stowaway Onboard | \$ 1000 per Stowaway (No disembarkation allowed of swowaway as per Govt. regulations) |
| 45. | Fine for violation of Port Security Rules | \$ 50 per act (Subsequently person will be blacklisted by the Security) |
| 46. | Wrong declaration of Gross Tonnage of Vessel | \$ 1000 |
| 47. | Violation of Using Satellite phones banned by Gov. of India (will be reported to MRCC and Other Govt. agency in case of violations found) | \$ 1000 |
| 48. | Vessel / Vessel agency Engaged in illegal Activities reported by Govt Authorities / Vessel master | \$ 500 per Incident. And subsequently cancelation of agency licence from Port |
| 49. | Failure to report release of CO2 at berth or within Port limit (Not permitted without advance permission) | \$ 1000 per incident. |
| 50. | Shore crane hire charges (for misc. activities) | \$ 300 per hours |

Note: - Any service requisition (such as Gangway, Hydra, Ship Chandelling, Fresh Water and Hot Work) has to be made at least 12 hrs prior vessel sailing and during office hours so that the service can be organized. GST will be charged on above all services as applicable. In case any services / permission request receives from vessel/ vessel agent apart from mentioned in BPTS, Port will provide service subject to availability of resources and charges will be provided based on complexity of services.

AA. FIRE FIGHTING ASSISTANCE TARIFF :

| S. No. | Service provided | Duration | Charges |
|--------|--|-------------------|---------|
| 1. | Fire Fighting at anchorage/offshore through port tug in case of emergency. | Per tug per hour. | \$ 4500 |
| 2. | Fire Fighting at alongside the berth on vessel or at on shore through port tug in case of emergency. | Per tug per hour. | \$ 2000 |
| 3. | Use of foam tender or water tender for fire call, spraying water and supplying water. (Fresh water charges USD 7 per MT will be applicable in addition to Water tender charges) | Per one hour. | \$ 130 |
| 4. | Foam tender or water tender standby with crew. | Per hours. | 50 |
| 5. | Fire crew standby (during hot work, hazardous cargo handling etc.) | Per 4 hour Shift | \$ 165 |
| 6. | Supplying water with pressure by using fire pump at liquid terminal and dry cargo area (Including the charge of water). | Per hour. | \$ 215 |

| | | | |
|-----|--|----------------------------|--------|
| 7. | Supplying sea water with pressure using fire pumps at jetty. | Per hour. | \$ 60 |
| 8. | Fire operator standby. | 4 hour shift. | \$ 25 |
| 9. | Uses of Foam concentrate (AFFF or Alcohol Resistant Foam). | One litre. | \$ 6 |
| 10. | Provide fire extinguisher for hot work (for one 10 kg DCP extinguisher) | Eight hour shift | \$ 6 |
| 11. | Providing fire extinguisher for hot work. | For one day (three shift). | \$ 14 |
| 12. | Providing portable fire pump for standby, firefighting and dewatering operation. | Per hour. | \$ 25 |
| 13. | Providing Smoke exhauster unit. | Per hour. | \$ 25 |
| 14. | Providing SCBA set. | One time use per Set. | \$ 25 |
| 15. | Imparting training (for outside agency) – maximum 4 hour limited to 20 persons. | Per session. | \$ 110 |
| 16. | Fire crew for on board for fire fighting | Per four-hour shift. | \$ 300 |

Note: In case of emergency on board the vessel, the port will mobilize emergency response service and the charges will be debited to vessel agent account. Port will not take confirmation from agent in case of emergency.

BB. Facility for Discharge of Ship generated waste

Vessels have to discharge ship generated waste (Like sludge, Slop, Garbage, scrap etc.), which are generated during voyage period, at any port of call. Disposal of ship generated waste into sea water is strictly prohibited as per MARPOL 73/78 convention as amended. India is signatory to this convention of IMO (International Maritime Organisation). For collection and disposal of ship generated waste, as per MARPOL 73/78, it has been made compulsories for all the countries, who are signatory to IMO, to provide shore reception facility. Accordingly, Adani Ports and SEZ Limited, Mundra provides this facility to vessels calling at this port through the private firms registered with Central Pollution Control Board and having valid approval to operate from State Pollution Control Board. These private registered firms make the necessary arrangement for discharge / reception of the ship generated waste from the vessel.

CC. SPM TERMINAL :

| | | |
|-------------------------|---|--|
| Port dues | \$ 0.0516 | Per GT. [Port Dues is payable per vessel Call and is valid for a maximum of 15 days.] |
| Pilotage charges | \$ 1.047 | Per GT. |
| Berth hire | \$ 0.208 | Per GT per day. |
| Pull back tug charges | \$ 2807.04 | Per 4 hrs shift [All fast time to commence unmooring] |
| Line boat | \$ 4385.96 Per boat per activity. | Sub to availability of suitable craft. |
| Additional Tug charges. | \$ 2807 For maximum 5 hours and \$ 701.75 for every subsequent hour | Tug used aft during berthing / unberthing process will constitute part of Pilotage charges. Any additional tugs used will be charge extra as per tariff. |
| Tug hires charges. | \$ 4385.96 | For maximum 5 hours and \$ 877.19 for every subsequent hour. If the same tug is used by two different parties for different vessels, then |

| | | |
|--|--|---|
| | | each party to pay the said charges. (Maximum 10 persons at a time) Note: Tug hire charges will be applicable for Custom inward and outward formalities (even if not utilised) |
| Ship Store / Spares supply charges at SPM anchorage / SPM | \$ 2000 plus tug hire charges (\$ 4385.96 for supply on spm) | 1. Not applicable for Quantity less than 500 kg. 2. USD 2000 applicable for quantity upto 5 MT. 3. Excess of 5 MT, USD 200 per ton will be applicable. 4. Maximum quantity not allowed more than 10 MT per trip. |
| Pilot standby charges. | \$ 78.95 | Per hour. |
| Anchorage charges. | \$ 0.0341 | Per GT / Day [Applicable for all vessels staying at anchorage]. |
| Shifting Charges. | \$ 1.047 | Per GT. |
| Note: 50% shifting charges will be applicable if Port decides to shift the vessel from berth due to bad weather & force majeure incident. Final decision of shifting the vessel will be as per Port's discretion taking into consideration the safety of port /vessel/crew, weather forecast etc. | | |
| Cold Move- Planned | Planned cold moves are subject to port management discretion. Cold move charge as at the rate of 3 times the pilotage charges as per SPM tariff. | |
| Cold Move- Unplanned | Cold move charge as at the rate of 1.5 times the pilotage charges as per SPM tariff. | |
| Note: a. For any other activity not covered above, charges will be applicable as per general Port tariff. b. For IOCL chartered vessels following is not chargeable. (i) Pull back tug charges. (ii) Pilot standby charges. c. Notice for Pilot – Ref page no-20 of BPTS. d. Anchorage charges are applicable for all SPM vessels anchoring within Mundra Port limits. | | |
| DD. SHIP TO SHIP TRANSFER OPERATIONS (STS) : | | |
| For Mother Vessel | Port dues (Port Dues is payable per vessel call and is valid for a maximum of 15 days) | \$ 0.065016 per GT |
| | Anchorage charges | \$0.001020 Per GT per hour |
| | Wharfage charges & cargo throughput charges. | INR 20 /- PER TON. |
| | Tug for inward custom clearance | \$ 1800 For maximum 3 hours and \$ 600 for every subsequent hour thereafter. |
| | Tug for outward custom clearance | \$ 1800 For maximum 3 hours and \$ 600 for every subsequent hour thereafter. |
| | Port environment Protection Safety and Dredging charges. | USD: 400 Up to 10000 GT USD: 600 10001 to 30000 GT USD: 800 More than 30000 GT |

| | | |
|---------------------|---|--|
| | Sustainability charges | \$ 0.03 per VCN (Minimum Charges \$ 200) |
| For Daughter Vessel | Port dues. (Port Dues is payable per vessel call and is valid for a maximum of 15 days) | \$ 0.065016 |
| | Anchorage charges. | \$ 0.001020 Per GT per hour |
| | Pilotage charges. | \$ 1900 |
| | Tug for inward custom clearance | \$ 1800 Minimum 3 hours and \$ 600 for every subsequent hour thereafter. |
| | Tug for outward custom clearance | \$ 1800 Minimum for 3 hours and \$ 600 for every subsequent hour thereafter. |
| | Berthing charges | \$ 3508.77 two tugs per 4 hours slab (minimum) |
| | Un-berthing charges. | \$ 3508.77 two tugs per 4 hours slab (minimum) |
| | Wharfage charges & cargo throughput charges. | INR 20 /- PER TON. |
| | Fuel Surcharge on Pilotage | Refer Page no. 29 point B1 note. |
| | Port environment Protection Safety and Dredging charges. | USD: 400 Up to 10000 GT USD: 600 10001 to 30000 GT USD: 800 More than 30000 GT |
| | Sustainability charges | \$ 0.03 per VCN (Minimum Charges \$ 200) |

Note: Tug hire charges will be applicable for Custom inward / outward if it is used or not used.

Tug hire charges for transportation and for store supply will be charges as per BPTS clause no. Q

EE. TARIFF FOR LNG TERMINAL

| | | |
|---|------------|---|
| 1 | Port dues | \$ 0.06192 Per GT (Port Dues is payable per vessel call and is valid for a maximum of 15 days) |
| 2 | Pilotage | \$ 1.125525 Per GT |
| 3 | Berth hire | \$ 0.224353 Per GT Per Day |
| 4 | Anchorage | \$ 0.0341 Per GT Per Day |

Note : Additional services will be charged as per normal Port tariff.

FF. LIGHTERAGE OPERATION CHARGES AT ANCHORAGE FOR DRY CARGO VESSEL

| Particulars | Mother vessel (vessels arriving with cargo to be transferred) | Daughter vessels (vessels receiving cargo) |
|---|---|---|
| Lighterage operation charges (From Double Bank all fast to Double Bank all cast off) | \$ 0.001785 per GT per hour. | \$ 0.000790 per GT per hour. |
| Anchorage charges for vessels lying on their anchors in stream and carrying out transshipment/ lighterage operations. | \$ 0.001020 per GT per hour. | \$ 0.001020 per GT per hour. |
| Double banking pilotage charges with tug assistance (If requested) | - | As per BPTS pilotage charges will be applicable |

Note :

1. Rest all charges will be applicable as per BPTS.
2. Permission for lighterage operation will be granted basis Custom permission.
3. The above charges will be solely applicable for Drycargo vessels only.
4. If any fender required for the operation, that needs to be arranged by the agent.
5. All Barges / floating cranes used for Lighterage operation should be arranged by the agent.
6. Tug hire charges for transportation of agent /custom, inward/outward clearance will be charged as per the BPTS.

GG. TARIFF FOR COUNTRY CRAFT :

| | | |
|---|---|--|
| 1 | Port Dues for Country Craft | \$ 0.15 per GT (Minimum \$ 746) |
| 2 | Pilot Exemption Certificate for Country Craft | \$ 75 per activity (includes berthing, un-berthing and Dhow not ready for sailing as per OWPM. |
| 3 | Berth Hire for Country Craft | \$ 0.020 per GT/per hrs. |
| 4 | Anchorage Charges | \$ 0.001020 per GT per hour |
| 5 | Mooring charges | Exempted |
| 6 | Port Environment safety protection charges | \$ 100 per VCN. |

Note: Other services will be provided as per BPTS tariff.

Note: The following charges have to be paid directly to "The Adani Harbour Services Pvt Ltd"

- Pilotage charges / Fuel surcharge
- Pilot Attendance Charges/Pilot Standby Charges
- Berthing process charges : a) Pilotage Cancellation Charges b) Pilotage Detention Charges
- Unberthing process charges: a) Pilotage Cancellation Charges b) Pilotage Detention Charges
- Shifting Charges
- Warping Charges
- Tug Hire for transportation of passenger only, Ship Store supply charges through tug, Tug for Custom formalities (Inward/Outward), Service boat
- Cold Move -Planned / Unplanned
- Additional Tug Hire (for assistance). Pull back tug charges
- Charges for Oil Spill Pollution response
- Fire Fighting at anchorage/offshore through port tug
- Garbage collection at Anchorage
- Fresh water at anchorage

HH. Wharfage charges

| S.NO | Commodity | Unit per | Rate in Rs |
|-----------|---|----------|------------|
| A | CHEMICAL | | |
| 1. | Solid Chemicals | | |
| | Chemical salt including processed edible salt, vacuum salt, iodized salt and gypsum | M.Ton | 32/- |
| | Soda Ash and Caustic Soda | M.Ton | 32/- |
| | Unprocessed Salt & Unprocessed Gypsum | M.Ton | 32/- |
| | All other solid chemicals other than petroleum derivatives. | M.Ton | 65/- |
| 2. | Liquid Chemicals | | |
| | Liquid Ammonia | M.Ton | 160/- |
| | Liquid Phosphoric Acid, Ethylene | M.Ton | 160/- |
| | All other liquid chemicals which are not petroleum or petroleum derivatives | M.Ton | 83/- |
| B | FOOD GRAINS & FOOD PRODUCTS | | |

| | | | |
|-----------|--|--------|----------|
| | Edible oil (bulk) | M.Ton | 66/- |
| | Food grains and Pulses | M.Ton | 65/- |
| | seeds of all sorts including castor, cotton, groundnut (decorticated or otherwise) | M.Ton | 65/- |
| | Fruits - fresh and dry of all sorts including dates | 50 KGs | 28/- |
| | Molasses, Sugar, Onions, Guar Gum, Coconuts, others. | M.Ton | 48/- |
| C | IRON & STEEL, OTHER METALS AND MACHINERY & PARTS INCLUDING BELTING | | |
| | Scrap - shredded - steel, metal, iron | M.Ton | 76/- |
| | Scrap - HMS, others | M.Ton | 98/- |
| | Sponge iron, pig iron, hot briquetted iron and iron slabs | M.Ton | 82/- |
| | Hot rolled and Cold Rolled Coils | M.Ton | 82/- |
| | Steel pipes, cement coated pipes | FRT | 43/- |
| | Machinery and parts | FRT | 98/- |
| D | MINERALS | | |
| | Bauxite, Bentonite, Iron ore in bulk, Lime stone | M.Ton | 38/- |
| | Calcinated Bauxite, Coke, Charcoal, Firewood, Lignite | M.Ton | 54/- |
| | Fluor spar | M.Ton | 54/- |
| | Coal (Except Coking coal) | M.Ton | 60/- |
| | Coking coal | M.Ton | 90/- |
| E | BAGGED CARGO | | |
| | Rice/Sugar/Soya bean meal (SBM) (Pulses any other Agri products). | M.Ton | 65/- |
| | Cement / Bentonite/Fly ash (any other minerals). | M.Ton | 65/- |
| F | PETROLEUM PRODUCTS & PETROLEUM DERIVATIVES | | |
| 1. | Solid Petroleum Products and derivatives | | |
| | Asphalt, Bitumen and Coal tar. | M.Ton | 83/- |
| 2. | Liquid Petroleum Products | | |
| | Lubricating Oil (fuel oil) | M.Ton | 95/- |
| | HSD | M.Ton | 110/- |
| | Kerosene | M.Ton | 110/- |
| | Naphtha | M.Ton | 110/- |
| | Petrol, LDO | M.Ton | 110/- |
| | Furnace Oil | M.Ton | 110/- |
| | Other Liquid Petroleum products | M.Ton | 110/- |
| 3. | Liquid Petroleum Derivatives | | |
| | Propylene | M.Ton | 95/- |
| | Paraxylene | M.Ton | 95/- |
| | EDC | M.Ton | 95/- |
| 4. | LPG & LNG | | |
| | LPG | M.Ton | 350/- |
| | LNG | M.Ton | 179.16/- |
| G | OTHER DRY CARGO | | |
| | Fertilizers of all types | M.Ton | 65/- |

[page](#)

| | | | |
|----------|---|-------------|------|
| | Oil cakes & de-oiled extractions | M.Ton | 48/- |
| | Cement, Clinker | M.Ton | 70/- |
| | Wood and Timber | M.Ton / CBM | 70/- |
| | All non-hazardous solid cargo not listed in above categories. | M.Ton | 70/- |
| | All non-hazardous liquid cargo not listed in above | M.Ton | 95/- |
| H | Wharfage charges (Payable on cargo handled through West Basin) | | |
| | Coal (Except Coking coal) | M.Ton | 60/- |
| | Coking coal | M.Ton | 90/- |

V. PIDC Charges

| Description | Tariff Applicable w.e.f 21 st April 2022) | Remarks |
|--|---|---|
| 20FT Container | Rs. 1600/- Per TEU | For all type of 20 FT containers including Power pack container |
| 40FT Container | Rs.3000/- per FEU | For all type of 40 FT containers including Power pack container |
| 45FT Container | Rs.3400/- per 45 FT Container | For all type of 45 FT containers and Power pack container. |
| Track occupancy & Weighment charges w.e.f 22 nd April 2022 | | |
| Weighment charges | Rs 25000/- per train weighment | |
| Track occupancy charges Rs 50,000/- per train per day or part thereof | Track occupancy charges per rake per day will be levied when rake is stabled between Adipur – Port or arrived at the R&D yard without comprehensive disposal plan | |

VI. Tariff for Salvage operation

| Charges Vessel in Emergency and/or under Salvage operations (Applicable w.e.f 07 th Jan 2023) | |
|---|---|
| \$ 2000 per tug per hour | Tug hire charges for the Salvage operations assistance within the Port limits |
| \$ 2000 per tug per hour | For Escorting/Standby for towing operation out side port limit jobs subject to MMD and necessary approval |
| \$ 5000 per tug per hour | For towing or engaged in salvage operation of any type of vessels outside port limit jobs subject to MMD and necessary approval |
| As per actual | Business loss or claim from third party |
| 1. \$2000 per hour with 100 tons crane. 2. \$3000 per hour with 200 tons Crane. 3. \$4000 per hour with 300 tons Crane. 4. \$ 5000 per hour with 400 tons Crane. 5. \$ 6000 per hour with any crane more than 400 tons. | Jack up Barge (JUB) With Crane mounted designed capacity. |

| | |
|--|--|
| \$ 1000 per hours per pilot | Pilot Service attended charges for salvage and any emergency handling |
| \$ 250 per hours | Service Boat charges (Small wooden boat) |
| \$ 500 per hours | Flat Rack Barge hire charge |
| 1. \$ 1000 per hours for Grab dredger 2. \$ 2000 per hour for Cutter suction Dredger (CSD) 3. \$ 3000 per hour for Trailer Head suction Dredger (THSD) | Dredging Assistance hire charges for salvage operations or Wreck removal |
| \$ 2000 per hour per location (Tug hire / Boat hire charges will be extra in addition to Diving operations charges) | Diving operation charges for Salvage operations |
| \$ 7500 per day (Only for one channel / Basin / berth pocket) | Bathymetric Survey during, on or after the salvage operations |
| \$ 1000 per day | Man Power cost per day for Involved in Salvage operation (Max 10 persons) |
| \$ 500 per day | Administration charges |
| \$ 100 per day per vehicle | Vehicle hire charges used for Salvage operations |
| 1. \$ 1000 per Teus 2. \$ 200 per Pkgs / Bags / Pcs / Units | Penalty for Cargo falling overboard |
| \$ 1 per GRT per day | Vessel grounding applicable charges within the Mundra Port limit exclusive of business loss due to Grounding of vessel and other required resources used for refloating of the vessel. |
| Technical / Legal Consultancy Fees for Liability Claim | As per actual and invoice furnished by the Legal firm or by the consultants |

Note:

- Charges mentioned for emergency and salvage operation is minimum tariff and may differ as per severity and complexity of the operation and time duration.
- Above mentioned resources and equipment's is subject to availability and if any resources and equipment are made available from outside port then mentioned tariff may differ as per the complexity of the operation and time duration.

VII. Stevedoring Tariff

A. TARRIFF FOR EQUIPMENT / GEAR HIRING

| | | | |
|----|---|-----------|---|
| 1. | Forklift of 42/32 MT SWL * Minimum charges for 1st slab will be 2 hrs. Thereafter on hourly basis. | USD 59.71 | Per Hour |
| 2. | Forklift Shifting by shore Crane. | USD 59.71 | Every Shifting Per activity. Jetty to hatch - one shifting. Hatch to jetty - one shifting |

| | | | |
|---|---|--|--|
| | | | One Hatch to another hatch -two shifting |
| 3. | Shore power supply | Rs 50/- | Per Unit |
| 4. | Weigh Bridge Charges | Rs 200/- | Per Vehicle |
| 5. | Pay loader HM 2021 | Rs. 1800/- | Per hour |
| 6. | Ex-200 | Rs. 2500/- | Per hour |
| 7. | CAT Loader | Rs. 3500/- | Per hour |
| 8. | Dumper Model-2518 | Rs.805/- | Per hour |
| 9. | LMC HIRING-15 MT | Rs. 4000/- | Per hour |
| 10 | Equipment deployment for cargo collection on jetty. (Applicable basis deployment of shore crane for vessel carrying cargo over 20,000 Mt) | Rs. 15/- | Per MT |
| 11. | Wrong declaration of Packing list submitted by the agent | Rs 10000/- | per change request. |
| ➤ Above equipment's will be provided as per availability - Outside equipment to be hired only if port Equipment is not available, only after prior permission from Port, complying with all port norms. | | | |
| B. SHORE CRANE CHARGES | | | |
| ➤ TARIFF FOR HANDLING BULK CARGO WITH SHORE CRANES FITTED WITH GRABS OF 27 TO 32 CBM FOR WHEAT | | | |
| 1. | Crane hire : | USD 1.50 per Metric Ton + Applicable GST. [Shore crane will be provided as per availability]. | |
| 2. | Grab hire : | USD 1.72 per Metric Ton + Applicable GST. | |
| ➤ TARIFF FOR HANDLING BULK CARGO OTHER THAN WHEAT | | | |
| 1 | Without screening:- shore crane + Grab Hire | USD 0.70 per Metric Ton + Applicable GST. [Shore crane will be provided as per availability]. | |
| ➤ Tariff for handling break bulk / Project cargo. | | | |
| 1 | Shore Crane Hire: | USD 225 per hour [Shore crane will be provided as per availability]. Minimum charge of 2 hours & above that on hourly basis. | |
| C. TARIFF FOR QC & MISC SERVICES PROVIDED AT MICT & AMCT CONTAINER TERMINAL FOR HANDLING STEEL PIPES, PLATES, COILS & PROJECT CARGO. | | | |
| 1. | AMCT QC Charges. | As mentioned in point no 1 (Shore crane hire) of port tariff. | |
| 2. | MICT QC Charges. | Rs. 70000/- per Hr. | |
| 3. | MICT Gangway Charges. | USD \$ 100/- per calendar day. | |
| 4. | MICT Shore Power Charges. | Rs 500/- per unit | |
| Note: Non Container Vessels which are berthed at MICT or AMCT Container terminal will have to pay shifting charges if required to vacate the berth for scheduled container vessel. | | | |
| Note: In case of Equipment Breakdown of all Port equipment's hired will be chargeable as per their respective slabs if repaired within 01 hour. | | | |
| D. PROJECT CARGO STEVEDORING RATES | | | |
| 1. | Up to 25 Freight Tons. | INR 299 per Freight Ton. | |
| 2. | Over 25 & up to & inclusive 40 Freight Tons. | INR 402 per Freight Ton. | |
| 3. | Over 40 & up to & inclusive 200 Freight Tons Or over 15 meter. | INR 711 per Freight Ton. | |
| 4. | Over 200 Freight Tons. | INR 917 per Freight Ton. | |
| 5. | Containers arriving on break bulk project cargo vessels at multipurpose berth will be charged as per project cargo tariff. | | |

| | | |
|---|--|-------------------------|
| | For Windmill Parts (As Specified in BL/ relevant custom document) | INR 155 Per Freight Ton |
| | In case of export movement, Dunnage, Choking and lashing material cost shall be charged extra at actual if required. | |
| | I. In case of any cargo re-stow is required during cargo operations; the stevedoring charges will be applicable as per port tariff, for applicable commodity on re-stow quantity only if same carried out on board without using transport /storage facility on wharf. | |
| | II. In case of any cargo re-stow is required during cargo operation with storage at wharf (without any transportation) & reloading with crane, single side stevedoring as per port tariff will be applicable for respective commodity on re-stow quantity. Single Stevedoring Charges. | |
| | III. In case of any cargo re-stow is required during cargo operation with storage at wharf & transportation for reloading , stevedoring as per port tariff (Applicable for unloading & reloading) will be applicable for respective commodity & in an addition to same, transportation charges/royalty will be applicable on case to case basis.-Twice Stevedoring charges + Terminal Handling Charges. | |
| | IV. In case of movement like roll on roll off or direct offloading to another vessel, stevedoring charges will be applicable as per port tariff. | |
| | <u>Crane Hire Charges applicable: USD 225 per hour, with minimum charges of 2 hrs and above that on hourly basis.</u> | |
| E. STEVEDORING CHARGES ON STEEL CARGO (COIL, PLATE, SLABS, ANGLES & BARS) (IMPORT / EXPORT). | | |
| 1. | Steel Plates / Slab – Import (For > 32 MT, Rs. 20 / PMT additional). | Rs. 155/ MT. |
| 2. | Steel Coils (HR) – Import (For > 32 MT, Rs. 20 / PMT additional) | Rs. 144/ MT. |
| 3. | Steel Coils (CR) – Import (For > 32 MT, Rs. 20 / PMT additional) | Rs. 195 / MT. |
| 4. | Steel Coils (HR) & Steel Plates – Export (For > 32 MT, Rs. 20 / PMT additional) | Rs. 185 / MT. |
| 5. | Steel Coils (CR/Other) – Export (For > 32 MT, Rs. 20 / PMT additional) | Rs. 258 / MT. |
| 6. | Steel Angles / Bars / Rods – Import. | Rs. 206/MT. |
| 7. | Steel billets / Rebars (Import / Export) | Rs. 258/MT. |
| 8. | Carbon Steel Plates (Import / Export) | Rs. 515/MT |
| 9. | Rails (Import / Export) up to 12.5meters in length | Rs. 309/MT |
| 10. | Rails (Import / Export) Above 12.5 meters upto 18meters in length | Rs. 515/MT |
| 11. | Rails (Import / Export) Above 18meters up to 25meters in length | Rs. 950/MT |
| | ** For stevedoring export of coils / plates / slab / angles / bars / rods, All Dunnage & lashing material used will be at actuals. | |
| F. STEVEDORING CHARGES ON STEEL CARGO - PIPES - IMPORT** | | |
| 1. | Steel pipes / Tubes equal & below 14 inches OD. | Rs. 464 / FRT. |
| 2. | Steel pipes / Tubes equal & below 24 inches OD & above 14 inches OD. | Rs. 309 / FRT. |
| 3. | Steel pipes equal & below 56 inches OD & above 24 | Rs. 180 / FRT. |
| G. STEVEDORING CHARGES ON STEEL CARGO - PIPES - EXPORT** | | |
| 1. | Steel Pipes equals & below 18 inches OD | Rs. 309/ FRT. |
| 2. | Steel Pipes equal & below 30 inches OD & above 18 inches OD | Rs. 211/ FRT. |
| 3. | Steel Pipes equal & below 56 inches OD & above 30 inches OD | Rs. 140/ FRT. |
| 4. | Steel Pipes above 56 inches up to 72 inches. (Dunnage & Lashing material will be charged additional at actuals) | Rs. 165/ FRT. |
| 5. | CWC / Cement coated Pipes / DI Pipes (Dunnage & Lashing material will be charged additional at actuals. Additional dunnage line charges not applicable) | Rs. 309/ FRT. |

**** Stevedoring rates are basis handling of Steel Pipes up to a maximum 72" OD for pipe length of Meter. For Pipes above 13.5 meter in length, please contact Port Marketing Team.**

H. STEVEDORING SCOPE (Pipe export) will be as per following :-

1. Normal Dunnage Wood will be scope of stevedoring for Sr. No. 1 to 3 as per below table :

| Pipe MT Range | | Normal Wood Inclusive |
|---------------|-------|-----------------------|
| 0 | 2000 | 10 |
| 2001 | 4000 | 20 |
| 4001 | 6000 | 30 |
| 6000 | 8000 | 45 |
| 8000 | 10000 | 60 |
| 10000 | 12000 | 75 |
| 12000 | 14000 | 90 |
| 14000 | 16000 | 105 |
| 16000 | 18000 | 115 |
| 18000 | 20000 | 130 |

2. Dunnage (4" x 4" approx.) on tank top load bearing strips maximum 06 nos [at a distance of 2mtrs] and for chocking/shoring and ship sides per pipe stake inside vessel holds.(Included for G.1-G.5 mentioned above)
3. 2 lines Lashing/securing with 16mm conventional wire ropes and compatible wire clips and turns buckle per pipe stake inside vessel hold. -refer Annexure 1. (.Included for G.1-G.5 mentioned above)
4. Rubber strip protection on tank top and ship's sides.
5. Lifting gears/spreaders/slings/ conventional pipe lifting hooks.
6. Above schedule of rates are applicable only for loading/stowage /securing of steel pipes inside vessel holds. In case of any UPPERDECK/TWINDECK/ON DECK/HATCH TOP stowage/ securing, the same would be additional & ascertained on case to case basis as the situation demands. The rates/costs will be calculated on the basis of actual requirement indicated by Master/Chief officer/Port Captain where there are special requirements like fabrication/fitting of Stanchions, pad eyes, stoppers, heavy lashing/ securing materials, wooden wedges etc.
7. Port does not allow external vendors to provide any dunnage material for Steel Vessels. Incase the same is onboard (from a foreign country) and the vessel wishes to use it, then approvals need to be taken from the marketing team at least 7 days before arrival of vessel.
8. Any additional Dunnage line with rubber padding required to create flat top line for balance between two different pipes in each stake will be on additional basis as separate charges for additional Dunnage line & rubber respectively.
9. Any Additional Dunnage used more than limit of respective slab due to choking or any other reason will be on chargeable basis on actuals.
10. Port does not allow external vendors to provide any lashing material (Barring lashing for Project Cargo Vessels). Rates for the same as follows:

DUNNAGE / RUBBER / LASHING MATERIALS USED

| Description | Units | Rates (Rs.) |
|--------------------|-------|-------------|
| Normal Jungle Wood | Line | 7500 |

| | | |
|--|---------------------------|--------------------------------|
| Normal Jungle Wood | CBM | 13500 / CBM |
| Pine Wood | CBM | 32500/CBM |
| Fumigation Charges | Per shipment per Customer | 25000 |
| Phytosanitary Certificate(If required) | Per shipment per Customer | 15000 |
| Rubber Line | Lines | 700 |
| Ratchet Belt - 30 M / 5 MT | Pcs | 4800 |
| Ratchet Belt - 25 M / 5 MT | Pcs | 4100 |
| Ratchet Belt - 15 M / 5 MT | Pcs | 2500 |
| Ratchet Belt- 13 M/ 10 MT | Pcs | 4500 |
| Ratchet Belt - 13 M / 5 MT | Pcs | 2500 |
| Ratchet Belt - 10 M / 5 MT | Pcs | 2200 |
| U Clamp | Pcs / Nos. | 140 |
| Bulldog clamp | Pcs / Nos. | 140 |
| Turn Buckles | Pcs / Nos. | 500 |
| D-shackle / D-Ring | Pcs / Nos. | at Actuals Subject to capacity |
| Lashing Wire | Per meter | 250 |

11. GST as applicable will be extra on all tariff rate and subject to change from time to time as per Govt. circular / guidelines.

I. STEEL CARGO HANDLING DIMENSIONS / WEIGHT

| Sr.No | COMMODITY | SIZE | | | | MAX WEIGHT IN MT |
|-------|--|----------|------------|---------|-----------|------------------|
| | | LENGTH | WIDTH | HEIGHT | THICKNESS | |
| 1. | STEEL COILS | | 1.8 MTR | 1.8 MTR | | 32 MT |
| 2. | STEEL PLATES / BUNDLE | 12.5 MTR | 4 MTR | | 25 MM | 24 MT |
| 3. | STEEL SLABS | 7 MTRS | 2 MTR | | | 32 MT |
| 4. | STEEL BARS / STEEL ANGLES / STEEL RODS | 12 MTR | IN BUNDLES | | | 10 MT |

| | | | | | | |
|----|----------------------|-----------|--------------------------------|---------|--|--------------|
| 5. | PROJECT CARGO | 15 MTR | 3.5 MTR | 3.5 MTR | | 30 MT |
| 6. | STEEL PIPES | | | | | |
| 7. | 2 OD- 12 OD (INCHES) | 13.5 MTRS | IN BUNDLE (MORE THAN 2 PIPES) | | | 2 MT – 10 MT |
| 8. | ABOVE 12 OD – 70 OD | 13.5 MTRS | SINGLE PIPES | | | 10 MT |

Note: APSEZ will allow direct delivery/carting of project cargo exceeding above dimension. In case same is desired to be handled by APSEZ, same is to be discussed with port marketing team on case to case basis. Other than above mentioned standard dimension for steel cargo, rates can be obtained from marketing desk.

A. calculation of crane idling charges due crane failure for the vessels berthed at Adani Port

Idling of vessel on account of following:

- Miss-declaration of cargo as prescribed in clause 6.15: If vessels crane are unable to discharge the said cargo, Lay-up berth hire will be applicable from the time of idling due to said package till the time, vessels request for the shore crane.
- Miss-declaration of vessel's gear/capacity: If in case of wrong declaration of vessel' gear/capacity Lay-up berth hire will be applicable till the time, vessels request for the shore crane.
- I. Total idling of vessel's cranes exceeding 10% of total available crane hours / day will attract crane idling charges. However, vessel / vessel agent can request for shore crane. In case of unavailability of shore crane, the crane idling charges would not be applicable.

- II. This intermediate crane idling charges will be USD 180/hr/hook as calculated below:

Note: In case of failure of ship crane, if the vessel agent request for shore cranes within 6 hours from crane failure time, then crane idling charges will not be charged to the vessel.

Example A:

* Vessel: x with cargo gear 4 x 25 MT SWL crane.

> Supposing the crane stoppages in 24 hrs are as follows:

- Crane 1 total stoppage 6 hrs and 30 minutes, (allow 2.4 hrs) = 4.1 Hrs.
- Crane 2 total stoppage 1 hr, (allow 2.4 Hrs) = Nil.
- Crane 3 total stoppage 4 hrs and (allow 2.4 hrs) = 1.6 hrs.
- Crane 4 total stoppage Nil. (allow 2.4 hrs) = Nil.
- Then, Total crane idling charges hrs = 4.1 + 0 + 1.6 + 0 = 5.7 hrs = 6 hrs.
- Total amount applicable for crane idling charges = 6 hrs x USD 180 = USD 1080 + applicable GST

Housekeeping of storage area: All basic housekeeping requirements is to be done by occupier of all the Storage area given on rent for long term basis.

B. Breakdown of ship crane wire/ other part or mechanism during cargo operation

1. Charges of USD 10,000/- per incident in case a vessel's Crane / derrick's wire, block, hydraulic system or any other system fails during cargo operations resulting in free fall of the cargo or the crane / derrick either on the vessel or on the berth.
2. Charges for repair/ procurement of damaged port property as assessed by the Port.
3. Charges for damaged cargo and its recovery from the water and its disposal if the cargo has fallen in to the water.
4. Charges for the complete treatment of the injured / affected personnel and compensation for the injury or disability as decided by the Port.

Note : 1. Port tariff is subject to Annual revision basis prevailing market conditions and Port management discretion.
2. GST as applicable will be extra on all tariff rate and subject to change from time to time as per Govt. circular / guidelines.

VIII. Contact details

Primary Contact Points

| | | | |
|---------------------------------|-------------------------|--|---|
| 1 | POC | Port Operations Center | 9825000949 portopscenter@adani.com |
| 2 | Customer Service Center | Customer Cell | 8980057000 customercell@adani.com |
| Important Contact Points | | | |
| 3 | CEO | Mr. Sujal Kumar Shah (Mundra & Tuna Ports, Site Head) | +91 6358015565 sujal.shah@adani.com |
| 4 | COO | Mr. Manoj Katar (Mundra & Tuna Ports) | +91 9879614724 manoj.katar@adani.com |
| 5 | Marine Services | Capt. Sachin Srivastava (Head-Marine services) Capt Rajat Garg (HOS Marine Services) Capt Girish Chandra (HOS Marine Services) | +91-63598 83102 sachin.srivastava@adani.com +91 63571 60037 Rajat.Garg@adani.com +91 6357231712 girish.chandra2@adani.com |
| 6 | Container Terminal | Mr. Pradeep Jayaraman (Terminal –COO) Mr. Cherian Abraham (Terminal Head CT3) Capt Pradeep Ramachandran (Terminal Head –AMCT & T2) Mr. Gajanan Govekar (Terminal Head -CT4) Mr. Sachin Garg (Head – SPRH) | +91-91520 36949 Pradeep.Jayaraman@adani.com +91 8980048850 Cherian.Abraham@adani.com +91 6358940439 Pradeep.Ramachandran@adani.com +91 7069013836 gajanan.govekar@adani.com +91 7486903790 sachin.garg2@adani.com |
| 7 | West Basin | Mr. Vivek Singh (Head West Basin) | +91 8980015440 vivek.singh@adani.com |
| 8 | Dry Cargo | Mr. Bhagwan Upadhye (Head Dry Cargo) | +91 98792 03599 Bhagwant.Upadhye@adani.com |
| 9 | Liquid/LPG Terminal | Mr. Gaurang Chudasama (Head Liquid) | +91 89808 02997 |

| | | | |
|----|-----------|--|--|
| | Marketing | | Gaurang.Chudasama@adani.com |
| | | Mr. Mukul Dekhane (Head-Marketing Liquid cargo) | +91-9821898934 |
| | | | Mukul.Dekhane@adani.com |
| | | Mr. Mohan Singh (Head-Marketing Dry cargo) | +91 8980802913 |
| | | | mohan.singh@adani.com |
| | | Mr. Diptanshu Sharma (Dry cargo Agri, Steel and Project business) | +91-9811865362 |
| | | | Diptanshu.Sharma@adani.com |
| | | Mr. Aman Saran (Dry cargo – Fertiliser business) | +91 7682858426 aman.saran@adani.com |
| 10 | Railway | Mr. Jawed Iqbal (Head- Railway services) | +91 90999 91319 |
| | | | Jawed.Iqbal@adani.com |
| 11 | Safety | Mr. Manan Bhatt (Safety & Fire services) | +91 9979855922 manan.bhatt@adani.com |
| | | | |
| 12 | Security | Col. Arvind Singh Bedi (Head-Security services) | +91 8003728111 arvindsingh.bedi@adani.com |
| | | | |
| 13 | Fire | Mr. Rakesh Chaturvedi (Head-Fire services) | +91 07069083035 Rakesh.Chaturvedi@adani.com |
| | | | |

Port Office
 Adani Ports and Special Economic Zone Ltd.
 Adani House, Post Bag No. 1
 Mundra
 Kutch, Gujarat,
 India 370421
 Tel: +91- 2838-289248 / 448
 Fax: +91- 2838-289200 / 440.

Corporate Office
 Adani Ports and Special Economic Zone Ltd.
 Adani Corporate House
 Shantigram
 Ahmedabad, Gujarat,
 India 382 421.